

	Min.	Max.	Precip.
Monday, Nov. 13	28	41	0.00
Tuesday, Nov. 14	28	38	Trace
Wednesday, Nov. 15	30	40	0.00
Thursday, Nov. 16	30	41	0.25
Friday, Nov. 17	33	45	0.00
Saturday, Nov. 18	33	49	0.25
Sunday, Nov. 19	30	34	Trace

The Chelsea Standard

QUOTE

Men always like to be a woman's first love. Women like to be a man's last romance.

—Oscar Wilde.

NINETY-NINTH YEAR—No. 22

14 Pages This Week

CHELSEA, MICHIGAN, THURSDAY, NOVEMBER 21, 1968

10c per copy

SUBSCRIPTION: \$3.00 PER YEAR

Bulldog Cagers Name Captains For Season

Mike Schmidt and Doug Weasler were elected to captain the 1968-69 Bulldog cage season by the team's members.

Coach Tom Balistrere was pleased with the team's choice of the two seniors, who have both previously lettered in basketball. "It's a good selection, and I think Mike and Doug will be fine leaders," he predicted.

The 12 survivors of rigorous tryouts and week-end practices and regular cuts are the two captains, Mike Schmidt, Jim Wojcik, Lance Conklin, Art Farley, Jim Hopson, Ken Dye, Len Kozma, Mike Aslett, Dan Wenk and Roy-Holmes.

Final cut was last Thursday, leaving four seniors, seven juniors and one sophomore, Jim Wojcik, who was promoted from the team as capable of playing varsity ball, which is "quite an honor" for a sophomore according to Balistrere.

The Bulldog cagers play their first game Dec. 6, when they meet at home. The coach is optimistic about the team's ability to improve on the 3-15 record last year.

Christmas Club Checks Mailed Totalling \$82,000

Most Chelsea Santa Clauses will again go through the annual January ritual of pulling on their beards and shuffling through large stacks of bills.

This little ceremony, celebrated in houses all over the world upon the arrival of the new year, has been properly rung in, will be cheerfully eliminated from the homes of the 502 Chelsea State Bank Christmas Club members.

This group now has, or had, in its possession checks amounting to \$81,000. The bank mailed the checks out last week. According to records, the program, increased by nine accounts and \$4,500 over last year.

Bank president Paul Mann refers to the program as a method of forcing one's self to save each week. He says that the principal is used not only for Christmas expenses, but for taxes and other large bills.

Kiwanis Club Names Fowler New Secretary

Kiwanians have selected Jack Fowler as secretary to replace the late Paul F. "Jerry" Nicholas, who held the position for 40 years. A committee headed by Walter Brown was named to work out details for a suitable memorial to Nicholas.

Glenn Knaal and Arden Musbach will be the most recent additions to the Chelsea Kiwanis Club after an induction ceremony scheduled for next month.

Knaal, supervisor of Waterloo Recreation Area, moved to Chelsea in March from Utica, where he managed the Rochester-Utica Recreation Area. He lives with his family on McClure Rd.

Musbach, a life-long Chelsea resident, has been on the sales staff of North American Rockwell Corp. for 14 years. He lives with his family at 159 Orchard.

Union Service Slated for Thanksgiving

The traditional Chelsea Union Thanksgiving service will feature the Rev. Warner Siebert, pastor of St. Paul United Church of Christ. The Rev. Siebert has chosen "The Therapy of Thanks" for his topic at the annual Ministerial Association-sponsored gathering, scheduled for 8 p.m. Wednesday at the Congregational church.

The Rev. Robert Worgess and the Rev. Daniel Kellin will assist in the service. Music will be provided by Connie Bauer from First United Methodist church and the Methodist and Congregational choirs.

The offering will be given to the Ministerial Association to use during the coming year.

Social Service Preparing Gifts For Christmas

The Chelsea Social Service will again be operating a Christmas bureau which insures that all needy families and single persons in the Chelsea School District will be able to celebrate Christmas.

Plans are being formulated for the co-ordinating of Christmas giving and receiving in Chelsea. Mrs. Louis Ramp, director of the social service, refers to their role in the Chelsea Christmas season celebrations as "co-ordinating the giving which the community conducts."

Needy families that have children will be given food, toys, games and other items supplied by the social service and groups and individuals in the community. Needy single persons and couples without children will be referred by the service to the Ann Arbor Salvation Army.

Families that have been in contact with the social service recently will be included. Anyone knowing of a family who may be in need should contact Mrs. Ramp any Tuesday or Thursday afternoon at the office of the Chelsea Social Service in the Municipal Building, or call GR 5-4681.

Distribution, scheduled for Dec. 21 from the Sylvan Town Hall, will include meat orders, non-perishable foods and a type of "toy store." Children or their parents may select, free, toys at the same time they pick up the food packages. Approximately 150 children and 50 adults are served in an average year.

A large assortment of new toys is being donated by the Ann Arbor Salvation Army for distribution in the "toy store." In the past, other gifts have been donated by the JC Auxiliary and Cassidy Lake project, church groups, individuals and various clubs and organizations.

Chelsea High school and junior high school students contribute a can of food each at an assembly the last day of school before Christmas vacation. Total donations from this project is usually approximately 500 cans. These are the basis of the boxes that are distributed at the hall.

Church groups and other organizations make cookies and decorations to dress up the boxes.

The Chelsea social service gives each family an order for fresh meat and other items for their holiday.

Mrs. Ramp cites as one of the most beautiful contributions the collection of dolls provided by the Women's Club of Chelsea and dress (Continued on page three)

R. C. Kerr Guilty in Fatal Auto Crash

Raymond C. Kerr was found guilty Friday of negligent homicide in the Nov. 11, 1966 death of Chelsea teacher Mrs. Susan D. Lake.

Kerr, 68, of 18900 Bowens, Manchester, was found guilty by Circuit Judge James R. Breakley, Jr., who heard the case in trial without jury in April.

Mr. Lake, a fourth grade teacher at North Elementary school, died following injuries received in the accident on Old US-12 and the I-94 westbound entrance at the foot of the Fletcher Rd. overpass.

Kerr was making a left turn onto the I-94 entrance from Old US-12 westbound lane at approximately 15 miles per hour when he collided with the Sunbeam auto driven by John B. Lake, husband of Mrs. Lake. He and his brother, William H. Lake were injured.

Breakley reviewed the testimony at the trial before announcing his verdict. He said that Lake and his brother, William, testified that Kerr turned suddenly into their (Continued on page three)

Need Early Copy For Next Week

Due to the Thanksgiving holiday next Thursday, The Chelsea Standard will go to press Tuesday night for Wednesday distribution.

To make possible the early publication, all advertising and news copy should be submitted one day sooner than regular deadlines.

News items or classified advertisements should be in before 5 p.m. Monday night to insure appearance in next week's issue. Display advertisements should be submitted Friday or Saturday if possible.

Mrs. Chapman especially enjoyed watching visitors bet on horses in movies, and said they were at least as excited as persons betting at a real horse race.

Mrs. Chapman says she enjoys traveling and takes advantage of chances to visit new places whenever she can.



QUEEN CANDIDATES: These four smiling queen candidates have been inspiring Chelsea High school students to empty their pockets into the penny jars this week. The girls receiving the most pennies (votes) will be crowned at the Nickel Carnival Saturday. They are, standing from left, Caryl Thornton, 11th grade candidate; Kathy Powers, 12th grade candidate; seated, from left, Debi Stoker, 10th grade candidate; and Cheryl Wilkerson, 9th grade candidate.

WCC Board Will Meet Here Tuesday Night

Chelsea area residents will have an opportunity to conveniently visit a Washtenaw Community College Board of Trustees meeting Tuesday night, when the WCC board will meet at Chelsea High school.

The meeting is scheduled for 7:30 p.m. in the Chelsea High school Board of Education room. This is the first of a series of meetings in parts of the county other than Ypsilanti, where all meetings have been held in the past. The purpose, according to WCC President Dr. David Pontiz, is to encourage persons who find it inconvenient to travel to Ypsilanti to attend meetings.

"The board fees very strongly that they don't represent segments of the county but the interests of the entire county," he explained. This is one new method of contacting persons from areas far from Ypsilanti.

Pontiz hopes that many persons from the Chelsea area will attend the meeting with suggestions, questions, and requests.

R. C. Kerr Guilty in Fatal Auto Crash

Raymond C. Kerr was found guilty Friday of negligent homicide in the Nov. 11, 1966 death of Chelsea teacher Mrs. Susan D. Lake.

Kerr, 68, of 18900 Bowens, Manchester, was found guilty by Circuit Judge James R. Breakley, Jr., who heard the case in trial without jury in April.

Mr. Lake, a fourth grade teacher at North Elementary school, died following injuries received in the accident on Old US-12 and the I-94 westbound entrance at the foot of the Fletcher Rd. overpass.

Kerr was making a left turn onto the I-94 entrance from Old US-12 westbound lane at approximately 15 miles per hour when he collided with the Sunbeam auto driven by John B. Lake, husband of Mrs. Lake. He and his brother, William H. Lake were injured.

Breakley reviewed the testimony at the trial before announcing his verdict. He said that Lake and his brother, William, testified that Kerr turned suddenly into their (Continued on page three)

Need Early Copy For Next Week

Due to the Thanksgiving holiday next Thursday, The Chelsea Standard will go to press Tuesday night for Wednesday distribution.

To make possible the early publication, all advertising and news copy should be submitted one day sooner than regular deadlines.

News items or classified advertisements should be in before 5 p.m. Monday night to insure appearance in next week's issue. Display advertisements should be submitted Friday or Saturday if possible.

Mrs. Chapman especially enjoyed watching visitors bet on horses in movies, and said they were at least as excited as persons betting at a real horse race.

Mrs. Chapman says she enjoys traveling and takes advantage of chances to visit new places whenever she can.

Council Briefs

At a regular meeting of the Village Council Tuesday evening, bids for a new cab and chassis were submitted by Palmer Motor Sales, G. A. Sales & Service and Spaulding Chevrolet. Motion was made and approved to accept the bid of Palmer Motor in the amount of \$3,098.

A request for rezoning of a parcel of land recently annexed to the Village, east of Freer Rd., was referred to the planning commission for action.

A petition submitted by the majority of the residents of the Flanders St. area was referred to the planning commission for study and recommendation. The petition requests that the council institute action which would rezone the commercial zoning, Residential Of. fice district, of that portion of said zone which lies south of Flanders St. in Lima township, to single family which would conform to the zoning now in effect in this area.

Kiddies Party Slated Dec. 9 By Kiwanians

Plans for the annual Kiwanis kiddies Christmas party are being completed by Chairman Charles Cox and assistants Dick Boss and Dr. Richard Borton.

The party, scheduled for Dec. 9, will include games, candy and, naturally, Santa Claus. Santa is finishing small gifts and candy to give to the 50 or 60 Chelsea youngsters who will be invited by Kiwanis members.

Cox said the basement of the Congregational church will be decorated for the occasion, probably by Kiwanis wives who can be recruited for a few hours.

While Santa has his elves working on gifts and candy for Chelsea children, he has decided to have them make extra for children at the St. Louis school.

Edward Beissel bagged a six-point buck on his property near Mill Lake Friday afternoon. This 150-pound deer makes the second in three years for hunting fan Beissel.

Nickel Carnival Slated Saturday At High School

Student Council Will Use Profits On Stereo Tape System for School

The Chelsea High school Nickel Carnival, scheduled for 1-7 p.m. Saturday, promises to be fun for all and give the Student Council a healthy shove on its way to buying a stereo tape system for their gift to the high school.

The expected increase in profits will be due to the firm in Detroit that has donated booths and games this year. Normally, these would have to be rented and therefore profits would be decreased. The only major expense this year will be prizes.

This is the sixth annual nickel carnival. Originally, it was the Penny Carnival, but inflation has caused the students to rename the event. Proceeds always are used for the traditional Student Council gift to the school.

Parents, children, students and any others who enjoy carnivals and games are invited. Some of the games that will be found in the gym will be a gambling wheel, rifle range, fish pond, 11 sided dice, under 11 over 30, yatzee, dart board, crazy ball, coke bottle toss, cane throw, tic-tac-toe, teddy bear ring toss, milk can toss, ring a duck and hoop toss.

There will also be a fun house, cake walk, basketball throw, make up booth, jail, and refreshments. Clowns will be selling helium balloons.

Students will vote for the carnival queen from among the four candidates elected by the four classes. They are Kathy Powers, senior; Caryl Thornton, junior; Debbie Stoker, sophomore; and Cheryl Wilkerson, freshman. One "vote" will be one penny in the container designated for each candidate. The winner will be the girl receiving the most money. She will be crowned by last year's Nickel Carnival queen, Pam Parnell, at the carnival. A dance in her honor will begin at approximately 8:30 p.m. at the high school.

Community Chest Fund at 95% of Goal

Chances for achieving the \$23,850 community chest goal are excellent, according to campaign vice chairman Dick Boss. The thermometer in front of the post office records approximately .95 percent of the goal already tabulated, with more to be counted from the rural mailings.

By this time next week, the campaign should be closed. Boss says that all groups have just about reached their goal, with industrial committee totaling the largest receipts. Chrysler Corp. led in this category with a \$4,800 check, not \$800 as previously stated, from company and employees. The largest company check was from Federal Screw Works, with a \$1,400 donation.

Hopefully, next Thursday, the goal will be exceeded, as it has been in previous years.

Two Youths Arrested By Police on Charge of Breaking, Entering

Two Chelsea youths arrested for other crimes have admitted to burglarizing a Boyer Auto Supply the night of Oct. 11, according to Detective Sergeant of the Washtenaw County Sheriff's Department.

A small amount of cash had been taken and two persons exited out the back door when they attempted to dry the roof with heaters.

Chelsea Fire Chief Jim Gaken said the fire was confined to the roof and damages were minor.

Farmers Night Set Monday By Kiwanis Club

Area farmers will be recognized Monday night at the annual Chelsea Kiwanis Farmers' Night dinner and program. Co-chairman Don Turner is planning to show films of farming, Polish style.

Farmers' night is also a salute to "Farm City Month" November. Between 60 and 70 farmers are expected to accept the Kiwanis invitation for the dinner program, according to co-chairman Walter Zeeb.

Minor Roof Blaze Brings Fire Department

Chelsea Fire Department put out a minor roof fire yesterday morning at Chelsea Milling Co. Workers on the roof had apparently ignited tar when they attempted to dry the roof with heaters.

Chelsea Fire Chief Jim Gaken said the fire was confined to the roof and damages were minor.

Appeals Court Upholds Decision in Lirette Case

Conviction of Steven J. Lirette, who is serving a prison term three years and nine months for years for involuntary manslaughter in the Aug. 3, 1966 death of Sheriff's Deputy Lee Borders, was upheld by the Michigan Court of Appeals.

Prosecuting Attorney William F. Wiley was notified Monday that the court upheld his position in the case. The jury on Oct. 17, 67 had upheld the prosecution's position that Lirette swerved to avoid the pursuing patrol car driven by Borders off Dexter-Pinckney (Continued on page six)



Mrs. K. Chapman Enjoys Week's Vacation in Bermuda

Mrs. Kathleen Chapman returned Nov. 11 from a week of sun, sea, fishing and sightseeing in Bermuda with a group of 103 Chelsea city employees.

Mrs. Chapman took a week off from her duties with the Co-operative Extension Service in the city building and traded a week at home at 629 N. Main to the popular Carlton Beach hotel in Bermuda.

The group departed from Windward, Ontario, airport and found themselves over Bermuda in 3 1/2 hours. As passenger planes often fly the length of the Atlantic island before landing at the airport. This short travel about the almost artificial island allows the visitors to witness color of water near Bermuda. Natives say that the coral reef surrounding the island gives the peculiar color.

Mrs. Chapman considers the half-day of deep-sea fishing as the highlight of the trip. She and two other women from the group rented a small boat and, accompanied by two crew members, spent four hours in a very rough sea. Mrs. Chapman and Alice Culver both caught almost identical 24-inch, 10-pound barracuda after a five-minute battle.

The ladies took a taxi tour of the island including a shopping trip to Hamilton, capital of Bermuda; a fort, and a perfume factory. The ladies were amazed to find that perfume processing takes almost a year for each quantity. The hotel provided many local entertainers performing such feats as hypnotizing audience members, as hypnotizing under poles practicing limbo dancing and dancing in fire.

Mrs. Chapman especially enjoyed watching visitors bet on horses in movies, and said they were at least as excited as persons betting at a real horse race.

Mrs. Chapman says she enjoys traveling and takes advantage of chances to visit new places whenever she can.



FIRST BUCK REPORTED: Deer hunting season didn't last long for Charles Smith, who shot this 6-point spike buck at 8:10 a.m. Friday morning. Smith, of Lingane Rd., hunted locally for the first time in 23 years, in an undisclosed wooded area northwest of Chelsea. He was unable to travel to the family cabin near Cadillac with his wife and three sons as in previous years, since his wife is undergoing tests at University Hospital. His local luck with the 150-pound buck won't keep him from returning to northern Michigan next year though, even if he only averages one deer every two years there.

Established 1871

The Chelsea Standard

Excellence Award by Michigan Press Association
1951-1952-1953-1954-1955-1956
Walter P. Leonard, Editor and Publisher

Published every Thursday morning at 300 North Main Street, Chelsea, Mich. 48118, and second class postage paid at Chelsea, Mich., under the Act of March 3, 1879.

ADDRESS CORRECTION REQUESTED

Subscription Rates (Payable in Advance)

In Michigan		Outside Michigan	
One Year	\$8.00	One Year	\$10.00
Six Months	\$5.00	Six Months	\$6.00
Single Copies	\$1.00	Single Copies	\$1.00

Service men or women, anywhere, 1 year \$9.00

NATIONAL NEWSPAPER ASSOCIATION

National Advertising Representative
MICHIGAN NEWSPAPERS, INC.
257 Michigan Ave.
East Lansing, Mich. 48822

YOUR INCOME TAX

Editor's Note: This column of questions and answers on federal income taxes is provided by the Detroit District office of the U. S. Internal Revenue Service, and is published as a public service to taxpayers. The column answers questions most frequently asked by taxpayers.

Q. I not married several months ago. If I keep on working should my husband claim my exemption or should I continue to take it?

A. If you plan to file a joint return at the end of the year as most married couples do, it won't make too much difference who claims your exemption for income tax withholding purposes. However, if you think separate returns would be to your advantage then you should continue to claim your own exemption.

Whichever you decide, remember, if your husband claims your withholding exemption then you will no longer be entitled to claim it. To make a change in the number of exemptions claimed, a new withholding certificate, Form W-4, Employee's Withholding Exemption Certificate, should be filed with your employer.

Q. I have a fellowship that will help pay my way through graduate school. Will I have to pay tax on it?

A. Income from a fellowship is usually tax exempt. If you are a candidate for a degree there is no limit on the amount of tax free income you may receive from a fellowship or scholarship grant. However, if you teach or perform other services in connection with the award, you may not exclude that portion of the award that represents payment for this work. The exemption to this rule would be if all candidates for the degree, whether they have a fellowship or not, are also required to perform these services.

Q. I have a little antique shop that I operate part-time. May I put what I make from this business into a tax-free retirement plan?

A. Up to 10 percent of your net earnings from the shop, up to a maximum of \$2,500, may be invested in a self-employed retirement plan. Your contributions to such a plan can be deducted.

For details on retirement plans for self-employed individuals, send a post card to your district office and ask for Document No. 5592, Retirement Plans for Self-Employed Individuals.

Q. I finally got my refund. Shouldn't I get interest on it? I have to pay interest to the government when I'm late in paying.

A. The government does pay interest on refunds that are not issued within 45 days of the date of the return or the date the return is filed, whichever is later. The interest rate is 6 percent per annum, the same rate taxpayers are charged who are late in paying their taxes.

Q. We sold some of our furniture for practically nothing when we moved. Is that a tax loss?

A. No. The law does not allow a deduction for losses on the sale of personal property.

Q. How far can IRS go back in checking a person's tax return?

A. The basic statute of limitations is three years from the date the return was filed or the date it was due, whichever is later. In fraud cases or where no return is filed there is no limitation.

The end of the world will probably catch a number of people promising to do better.

SPECIALS

MONDAY—Chicken Cacciatore
Hunter Style\$1.79

TUESDAY—Roast Sirloin
of Beef\$1.89

WEDNESDAY—Italian Pepper
Steak\$1.79

THURSDAY—Swedish Beef Steak
with fried onions & mushrooms\$1.90

FRIDAY—Beef A-la-Stronoff
Fisherman's Platter\$1.79

SATURDAY—Twin Fillets of Beef
cooked with peppers, onions, tomatoes and mushrooms. Baked Potato\$2.95

SUNDAY—Sweet & Sour Barbecue
Chicken\$1.89
Beef A-la Mode\$2.35

This also includes a trip to the bread and salad table.

Paul Bunyan
JACKSON RD. at ZEEB RD.

Pre-Christmas SAVINGS ON ALL FURNITURE & APPLIANCES

Our showroom is loaded with the latest styles in fine furniture and appliances. Our problem is that we have more merchandise being shipped and we have no space to display it. You can help us and yourself by coming in now and taking advantage of special price concessions being made to clear our floor space.

For the Finest Selection and Best Buys in Furniture and Appliances See Us Today!

MEABON'S TV, FURNITURE & APPLIANCE

1170 M-52 South, Chelsea Phone GR 5-5191



MICHIGAN MIRROR

By Elmer E. White, Secretary, Michigan Press Association

Public Watchdog
Government watchdogs in Lansing are supposed to see to it that the electric, gas and telephone companies don't gyp their customers.

That's the job of the Michigan Public Service Commission (MPSC), the agency which screens public utility requests for rate increases.

It has the duty to allow rate levels high enough to provide a fair and reasonable return to utility shareholders, but no higher.

The MPSC's accountants, engineers, economists, auditors and other specialists have their hands full most of the time with rate petitions.

"Each petition is given thorough consideration, including a public hearing," said Knight D. McKesson, commission secretary. "The ratepayer's posture is always on the commission's mind."

Some utilities file requests for immediate fee increases, with the stipulation they will roll them back if the commission rejects the petition.

But under the law, "partial and immediate" rate relief can be granted only on solid evidence of need, notice to ratepayers and an opportunity for full and complete public hearings.

As state agencies go, the MPSC is peanuts. Before transfer of 80 truck weight regulation workers from the highway department, it employed only 97 of the nearly 44,000 on the state payroll.

The commission's size hasn't changed appreciably in 10 years, and repeated requests for more manpower are routinely rejected in the legislature. Utility lobbyists seldom weep about this.

The commission's chairman, Peter Spivak, a Republican, Detroit attorney, draws \$20,500. Commissioners Willis Ward of Detroit, a Republican, and William

Boos Jr. of Bay City, a Democrat, each get \$19,000.

Real watchdog unit within the commission, the public utilities division—or "staff," as it is known in rate cases—consists of 27 persons.

These include six accountants, two economists, 11 engineers, an engineering technician and seven administrative and clerical personnel.

This handful monitors 30 electric utilities counting co-ops, 11 gas companies, 72 telephone companies, 15 private water companies and, in a limited way, 26 gas pipeline firms.

The staff runs a continuous rotating check on the value of utility assets—generators, utility poles, switchboards and pipe lines.

In a rate case, the value of plant and property used to provide service is a crucial concept. Reasonable returns to investors is figured on a percentage of plant investment.

After the petitioning utility finishes its testimony, the MPSC staff develops an entire case on its own. In 1960 when the MPSC granted its last general rate increase to Michigan Bell Telephone Co. of \$4 million, the staff recommended a rate reduction of \$4.1 million, and was backed by one commissioner, the late James Lee, a former assistant Detroit Corp. counsel.

Where does John Q. Ratepayer figure in MPSC proceedings?

He can write the commission a letter or postcard, attend a public hearing in person and give his views, or join with others in submitting a petition.

As one out of 2 1/2 million, his impact is likely to be slight. Rate cases are highly complicated and specialists are almost a necessity. It is not enough merely to say "I don't want to pay more."

Only a big city with experienced

Uncle Lew from Lima Says:

DEAR MISTER EDITOR:

Clem Webster announced to the fellers at the country store Saturday night that once again them science fellers has improved on nature. Clem had saw in his farm journal where them folks at North Carolina State University had decided a sow makes a pore mother and they had made a machine to replace her.

This mechanic pig Mama is called the Autosow, Clem said, and them science fellers claims it does a better job of feeding and rearing the pigs than their real Mama.

For instant, Clem said, one of the big mistakes nature makes with pigs is too many to the litter. According to nature, when a sow has more pigs than she's got places at the table the weak pigs can't get to the table starve or grow up punts. The Autosow, Clem said, feeds all the pigs automatic and the same.

The Autosow treats everybody alike. Them science fellers found that pigs raised in a "free environment" was open to all kinds of risks and sickness, but the Autosow had brought equality to the pig world, was Clem's words. And the pigs was so young when the Autosow gits 'em they don't never know they had a real Mama.

Ed Doolittle thanked Clem for his fine report. Ed said the wimmen folks had been using the Auto-Ma fer years and he was glad we had worked out somepun fer the pigs. Based on what he had heard from the wimmen folks, Ed said he figured the sow would be mighty glad the Autosow come along.

Zeke Grubb was agreed with Ed, was of the opinion that the Autosow would do fer the sow what nursery, kindergarden, tel-

evision, and throw-away dippers and bottles has done fer wimmen. In the old days, said Zeke, the Mama had to nurse her young'uns and look after 'em day and night but now she can farm 'em out and have time to git her hair fixed three times a week and with the bottles she figures her husband can feed the baby. They take the attitude, said Zeke, that, after all, the baby is as much his as hers.

Personal, Mister Editor, I ain't agreed with the fellers on this trend of putting everthing on the automatic. I may be old fashioned but I figger a Mama had ought to be looking after her young'uns more and using the auto less. And I ain't too shore but what this new Autosow won't change the taste of hog meat afore they git through with it, change it fer the worse. I was reading this piece in the papers yesterday where them science fellers might be able to control the weather in another 10 year. I figger nature was coming closer to suiting everybody with the weather than a Government agency could. And if I know anything about them agencies, it shore will be a heap cheaper.

Yours truly,
Uncle Lew.

MONEY TROUBLE?

ONE PLACE TO PAY!
Credit Management Service
662-2565
342 Municipal Court Bldg.
Ann Arbor
State Licensed and Bonded

JUST REMINISCING

Items Taken from the Files of The Chelsea Standard

4 Years Ago . . .
Thursday, Nov. 12, 1964—Don Proctor won first prize in this week's football contest in the adult division with his prediction of 18 wins out of the possible 20 in the high school and college and pro games listed.

Thomas Eisele is announcing open house Saturday and Sunday at the Van Buren East apartment building which is nearing completion.

Succeeding Murray S. Hudgins as pastor of the Church of Christ, 13801 Old US-12, is C. Arthur Peddle, who has served the past 4 1/2 years as pastor of the Church of Christ at Ypsilanti.

The Rev. Paul M. Schnake, pastor of St. Paul's United Church of Christ the past five years, has submitted his resignation in a letter read to the congregation following the Sunday morning service by Theodore Faust, Church Council president.

Word has been received here that Alden Cooper, who entered service in the U. S. Navy in December, 1961, was made ship's librarian and educational yeoman of the USS Ajax.

Marine Pvt. David Kruse, son of Mr. and Mrs. M. T. Kruse of 2100 Conlin Rd., Chelsea, completed basic training Oct. 7 at the Marine Corps Recruit Depot, San Diego, Calif.

Paul G. Schable, Jr., has been named one of nine Washtenaw county directors of the Southeast Michigan Tourist Association. The 34th annual meeting of the association was held Oct. 28 at Bloomfield Hills.

At the monthly birthday party yesterday at the Methodist Home three of the November birthdays were for over 90 years. Mrs. Isabelle Helfrich, formerly of Ypsilanti, was 94 years old; Mrs. Helen Bradley, formerly living in Lewis-ton Pa., was 93; and Archie McCoy, who came here from Akron, Mich., will be 91 Nov. 23.

Mr. and Mrs. Donovan Sweeney were honored Sunday at a family dinner in observance of their 40th wedding anniversary. The dinner took place at the home of their son and daughter-in-law, Mr. and Mrs. Franklin Sweeney.

14 Years Ago . . .
Thursday, Nov. 11, 1954—Chelsea High school principal John Griffin and Carl Chandler, English and French instructor, attended a workshop meeting of the annual principal-freshmen conference at the University of Michigan Nov. 3.

W. J. Grossman was the successful bidder for the sale of eight 60-passenger GMC school buses for the Lincoln Consolidated Schools school district.

A total of 385 Kiwanians, local people and out-of-town guests were served at the Kiwanis pancake supper in the Chelsea High school gymnasium Monday. General chairman of the supper was Jack Merkel with James Liebeck in charge of ticket sales, M. J. Anderson, chairman of the house committee and H. T. Moore in charge of the kitchen. Tom Eisele and Neil Buehler, Chelsea High school seniors, were guests.

Saturday night tabulation of Community Chest contributions showed a total of \$6,900 has been turned in during the week. Alfred

Mayer and Lowell Davison, co-chairmen of this first Chelsea Community Chest campaign said they are hopeful the \$9,000 goal will be reached by Saturday night.

Mrs. Kathleen Hatt returned Oct. 31 by bus from a trip to the west coast. Mrs. Hatt and Miss Jensen with Mrs. Agnes Wilson of Ann Arbor, started the trip west together, going by automobile to Los Angeles by way of Salt Lake City, Utah, Reno, Nev., and San Francisco.

Students receiving all A grades were Zita Myers, Connie Steinbach, seniors; Nancy Atkinson, junior; and Lydia Mayer, sophomore.

The Manchester Exchange club completed plans for entertaining winners of the Oct. 24 Economy Run, and their coaches, at the regular dinner meeting of the club at 6:45 p.m. Monday, Nov. 8. At that time James McLaughlin of Chelsea, first-place winner in the heavy-weight division, and Kent Ingraham of Brooklyn, first-place winner in the middleweight group, will be presented with their award trophies. McLaughlin, driving a 1964 Cadillac, got a total of 61,004 ton-miles and 24.61 road miles per gallon.

24 Years Ago . . .
Thursday, Nov. 16, 1944—Sgt. James H. Barkley, 19, of Chelsea, has been awarded the Air Medal for "courage, coolness and skill" displayed while on bombing attacks over Germany. The airman is a left waist gunner in the Eighth Air Force B-17 Flying Fortress group commanded by Colonel Frank P. Bostrom of Bangor, Me.

Word has been received by Mr. and Mrs. Merle S. Barr that their son, Merle, Jr., received his first Lieutenant's rank Oct. 4, 1944. Merle is now stationed somewhere in Germany.

John Buehler, N. Main St., was pleasantly surprised by relatives and friends from Detroit, Ann Arbor, and also neighbors, to help him celebrate his 83rd birthday Friday evening.

Mr. and Mrs. Robert Gilbert and son attended a family dinner at the home of Mrs. Ivah Hankard of North Lake on Sunday. The dinner was given in honor of WA-VE Audrey Gilbert who is on furlough from Miami.

The boys of the Cassidy Lake Project played their third and fourth basketball games of the season Wednesday night, Nov. 9.

when they met the Chelsea Standard in a double-header. The contest ended in a double defeat for the Cassidy Lake five to the tune of 34-20 and 38-24. The line-up of the quintette from Chelsea was: manager Don Albee, Dick Poor, Hank Orbin, (Shelby) Maest and Loren Myers. The Chelsea boys showed the result of fine training with the result of physical fitness, for not one situation was made for them during the games.

34 Years Ago . . .
Thursday, Nov. 15, 1934—Officers for the year 1935 were elected by the local Kiwanis club at their Monday evening meeting as follows: President, E. W. Edson; vice-president, the Rev. Erick D. Munby; treasurer, Robert Hall; directors, H. L. Bleeker, Norman Grimwade, R. B. Walcott, M. W. McClure. Directors whose terms have not expired are G. H. Hindelang, P. G. Schable and H. D. Witherell.

E. E. Gallup, superintendent of the State Agriculture Dept., recently authorized, with the aid of Mr. Lyons and his students, Future Farmers of America organization for the Chelsea Agriculture Dept.

Mrs. Oscar Stierle entertained about 20 relatives, and friends Monday evening in celebration of Mr. Stierle's birthday. Prominent guests in the party were: Floyd Boyce of North Lake, who suffered injuries to his right leg Thursday noon. Boyce is employed at Federal Screw Works and during the noon hour decided he was sharp on an axe. He was taken to St. Joseph Mercy Hospital.

Robert Williams, son of Mr. and Mrs. C. J. Williams, and member of the Chelsea high school football team, was injured during the game with Manchester Holmes field on Friday afternoon when he suffered a broken collar bone.

A NOTE OF THANKS

At this time I wish to thank the citizens of Washtenaw County, and all those who worked for me in the recent District Court election for their vote of confidence. I pledge my full cooperation in helping to set up an efficient and fair District Court system.

PATRICK J. CONLIN
DISTRICT JUDGE-ELECT

Putting you first

vaaarrrooooooomm

keeps us first.

Chevrolet's got a big surprise for the guy who'd buy a sports car if only it had more room. It's the Impala SS 427.

Like all Impalas, it comes with a 119-inch wheelbase, Astro Ventilation and full door-glass styling. Like all Chevy Sportsters, it comes with a beefed-up suspension and grabby red-stripe wide oval tires. Under the hood, it's more of the same. We tucked in a 427-cubic-inch 390-horsepower Turbo-Jet V8. That means it's the kind of car you can take for a workout even if you're just going to work.

There's driving excitement in these other packages too: Corvette Stingray, Chevelle SS 396, Camaro SS, Camaro Z/28 and Nova SS. Listen for it at your Chevy dealer's Sports Shop.

Putting you first, keeps us first.

See the Super Sports at your Chevrolet dealer's Sports Department now.

66 Impala SS 427 Custom Coupe

Winners Listed In Jaycee Fishing Contest

The "First annual Chelsea Jaycee Fishing Contest" winners will be receiving their checks in the hall shortly, according to Jaycee president Don Proctor.

The fishing contest, during the month of August, included nine counties and approximately 15 chapters. The idea originated in the Chelsea chapter, which offered to furnish publicity, pamphlets, etc., in return for half the ticket sales receipts.

The \$800 in prizes went to persons catching fish that were close to the state record.

Grand prizes of \$100, \$75 and \$50, respectively, went to Austin Cassidy, 8-pound 4-ounce, 27½-inch Walleye; Douglas Sherrard, 8-pound, 4-ounce, 12-inch Rock Bass; and Peggy Helka, 15-ounce, 24-inch Rock Bass.

Winners in the five individual categories, receiving checks from \$5 to \$3, were: Panfish, Douglas Sherrard, for his Rock Bass; Tom McManis, for his Rock Bass; Dan McManis, for his Rock Bass; Dan McManis, for his Rock Bass; and Arlene Howe, for her Walleye.

In the Bass category, Tom Lamb, for his 5-pound 6½-ounce, 21½-inch Largemouth; Douglas Sherrard and Arlene Howe.

In the Pike category, Frank Jackwell won with a 5-pound 13-ounce, 31-inch Northern, winning the Perch division was Frank Sweeney with his 11-ounce, 11½-inch yellow perch; and Douglas Sherrard.

Austin Cassidy won the Walleye division and the grand prize. Jaycee president Don Proctor says it is uncertain whether they will sponsor another month-long fishing contest next summer, since the Jaycees lost money on this one.

They will have a one-day fishing contest in February for winter fishing fans.

WILLYS AID

A newly developed adhesive makes it possible to laminate almost any fabric you like to a regular cloth window shade. This means you can now have window shades to match your slipcovers or drapes.

Michigan GO guide

GENESEE COUNTY

FLINT

- SLOAN PANORAMA OF TRANSPORTATION
- DEWATER'S ART INSTITUTE
- ROBERT LONGWAY PLANETARIUM
- BUICK AUTO PLANT TOURS
- CHEVROLET AUTO PLANT TOURS
- AC SPARK PLUS PLANT TOURS
- FISHER BODY PLANT TOURS
- ANNUAL 400,000 BUICK OPEN GOLF TOURNAMENT

FLUSHING

- INDIAN BURIAL GROUNDS
- ARSENINE
- OLD FLOUR MILL

DAVISON

- FOR INFORMATION, VISITORS: DON HENNINGSTON, 1000 N. BAY CITY, MICH. 48706

BE EXTRA CAREFUL ON SHORT TRIPS. LAST YEAR MORE THAN 50 PERCENT OF ALL MICHIGAN ACCIDENTS OCCURRED WITHIN 25 MILES OF THE DRIVER'S HOME. GO BE EXTRA ALERT IN FAMILIAR SURROUNDINGS.

Bring 'em back ALIVE!

R. C. Kerr Guilty In Fatal Crash

(Continued from page one)

lane just before impact and that John Lake had no time to avoid hitting him.

Kerr said that he thought the car coming toward him was going to turn onto Fletcher Rd., which both were approaching from opposite directions. Kerr said he turned toward the shoulder of Lake's lane to avoid him and that Lake returned to his lane. Two-thirds of his car was across the center line in Lake's lane while the Lake auto was two feet into Kerr's, according to Kerr.

He testified that he has spent several hours in the afternoon in a restaurant-tavern. Another patron testified that Kerr was capable of driving at the time he departed. The accident occurred 15 minutes later.

Breakney concluded, "It is the opinion of the court that the defendant is mistaken as to what took place and that the testimony of Mr. Lake and his brother is substantially correct and established the guilt of the defendant beyond a reasonable doubt."

Sentencing has been set for Dec. 6.

U-M Senior Student Needs Information About Early Chelsea

(Continued from page one)

Mrs. Thomas Thalner, Chelsea resident and senior social studies major at the University of Michigan, is compiling information about early Chelsea.

Anyone having letters, diaries, clippings, written or verbal stories containing facts or capturing the flavor of early Chelsea would help her tremendously by loaning them to her for her paper. The period that Mrs. Thalner is concerned with is before 1870.

All materials will be safely returned in the same condition in which they were received.

Persons wishing to contribute to this original work should contact her at 88 Sycamore or call 475-8009.

SEA LANES

About 90 percent of all cargo delivered to allied troops in the 1st Corps Tactical Zone of South Vietnam—the country's five northernmost provinces—travels by sea and river on boats and ships operated by U. S. Naval Support Activity, DaNang.

Subscribe Today to The Standard!

Youths Arrested on B & E Charge

(Continued from page one)

Incident after being arrested on another breaking and entering charge. He admitted that he had been involved in four other breaking and entering incidents in recent weeks, according to Severance.

Donald R. Caudill, 18, of 1800 Old US-12, admitted to accompanying Skodak during the Boyer incident. Caudill is being held at Ingham county jail, where he was sent after being arrested by Chelsea Police Chief George Meranuck Oct. 31 on a warrant from Ingham county for larceny from a motor vehicle.

Skodak waived examination and is scheduled to appear in circuit court Friday. Caudill will be held in Ingham county until after disposal of his Oct. 31 arrest, then will face charges for breaking and entering, according to Severance.

Social Service...

(Continued from page one)

ed by women at the Chelsea Methodist Home.

"The social service is able and willing to help all families in the community that are not provided for" according to Mrs. Ramp. Anyone needing assistance or having knowledge of a family that does, is urged to contact Mrs. Ramp.

DEXTER DRAMA CLUB

Presents

"TEN LITTLE INDIANS"

By Agatha Christie

Friday, Nov. 22 and Saturday, Nov. 23

Dexter High School

Admission: \$1.00

4-H Clubs

WIDE-AWAKE

Wide-Awake 4-H club met at the home of Karen Mandel Saturday. Awards will be given at the Fall Achievement Program to be held 7:30 p.m. Friday, Nov. 29 at Chelsea High school cafeteria.

A demonstration of laying and cutting out patterns was given by Dorothy Gauss. Thanksgiving favors were made and refreshments were served by the hostess.

The next meeting is to be at the home of Mary Niehaus, Dec. 14.

Indecision is costly but hasty action sometimes costs more.

Mrs. F. Elmufli Heads English Department of Wyandotte Schools

(Continued from page one)

The Wyandotte Board of Education, on recommendation of School Superintendent Fred P. Davison, officially appointed Mrs. Farouk Elmufli chairman of the English and foreign language department of Wyandotte public schools at a regular board meeting Monday, Nov. 18.

Mrs. Elmufli is the former Donna Jean Osterle, daughter of Mr. and Mrs. Donald J. Osterle of Ann Arbor, formerly of Chelsea. She attended Chelsea schools until the family moved to Brighton and she graduated from Brighton High school in 1959; received her bachelor's degree in 1963 at Eastern Michigan University where she majored in English and in 1965 received her master's degree there. She has begun studies at the University of Michigan toward a doctoral degree in English.

Mrs. Elmufli has taught senior high school English classes at Theodore Roosevelt High school in Wyandotte the past five years and served as acting chairman of the English department of Wyandotte public schools that past year and until her official appointment this week.

Her husband who has bachelor and master degrees in American history from Eastern Michigan University, teaches social studies at Wyandotte High school.

Mr. and Mrs. Elmufli and their four-year-old daughter, Lana, live at 4198 Packard Rd., Ann Arbor.

Mrs. Elmufli is a granddaughter of Mr. and Mrs. Elmer Winans and Mrs. John Osterle.

Brass and copper screens don't rust—but they do oxidize and discolor. Aluminum screening often becomes coated with white oxide deposits. Both corrosion and oxide deposits will cause staining on adjacent areas when it rains.

To protect your screens, they should be painted with a pigment of screen enamel or a suitable clear coating.

Sentence Delayed In Case of Howell Radio Executive

A Howell man who pleaded guilty to negligent homicide in the Aug. 3 death of an Ypsilanti couple had sentencing adjourned to Nov. 29 last Friday.

Circuit Judge James R. Breakney, Jr., said the adjournment was not requested by Frank M. Bignell, 53, the defendant, or by the prosecution.

He said he decided on the adjournment so that he can determine the claims of the two estates for which lawsuits are expected to be filed seeking damages from Bignell. He will need to know the status of these matters if he imposes restitution as part of a probationary sentence.

Bignell, general manager of WHMI radio station in Howell, lost control of his car on M-52 at Green Lake and hit Mr. and Mrs. Ellis Kincer, 21 Center St., Ypsilanti. They were walking south along the shoulder of M-52 with their 16-year-old son Jimmy Wayne Kincer who has escaped injury by jumping clear of the car. When pleading guilty Aug. 4 Bignell had said he was "too much pre-occupied with a business matter to be driving."

The world is filled with people who believe anything nice that is said about them.

Christmas Arrives On Time
ONLY 29 SHOPPING DAYS LEFT

BREEZE THRU CHRISTMAS SHOP EARLY

BEAT THE RUSH

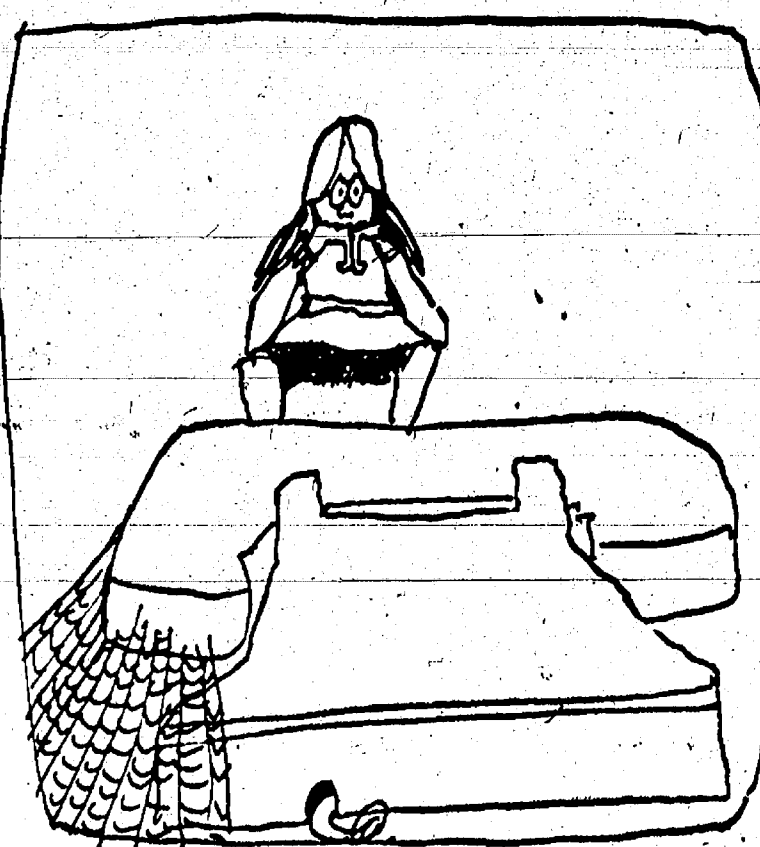
Shop

DANCER'S

Chelsea's Friendly Dept. Store

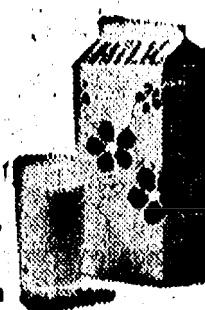


Some gals drink milk.



Some don't.

Milk is cool.



Michigan Milk Producers Association.

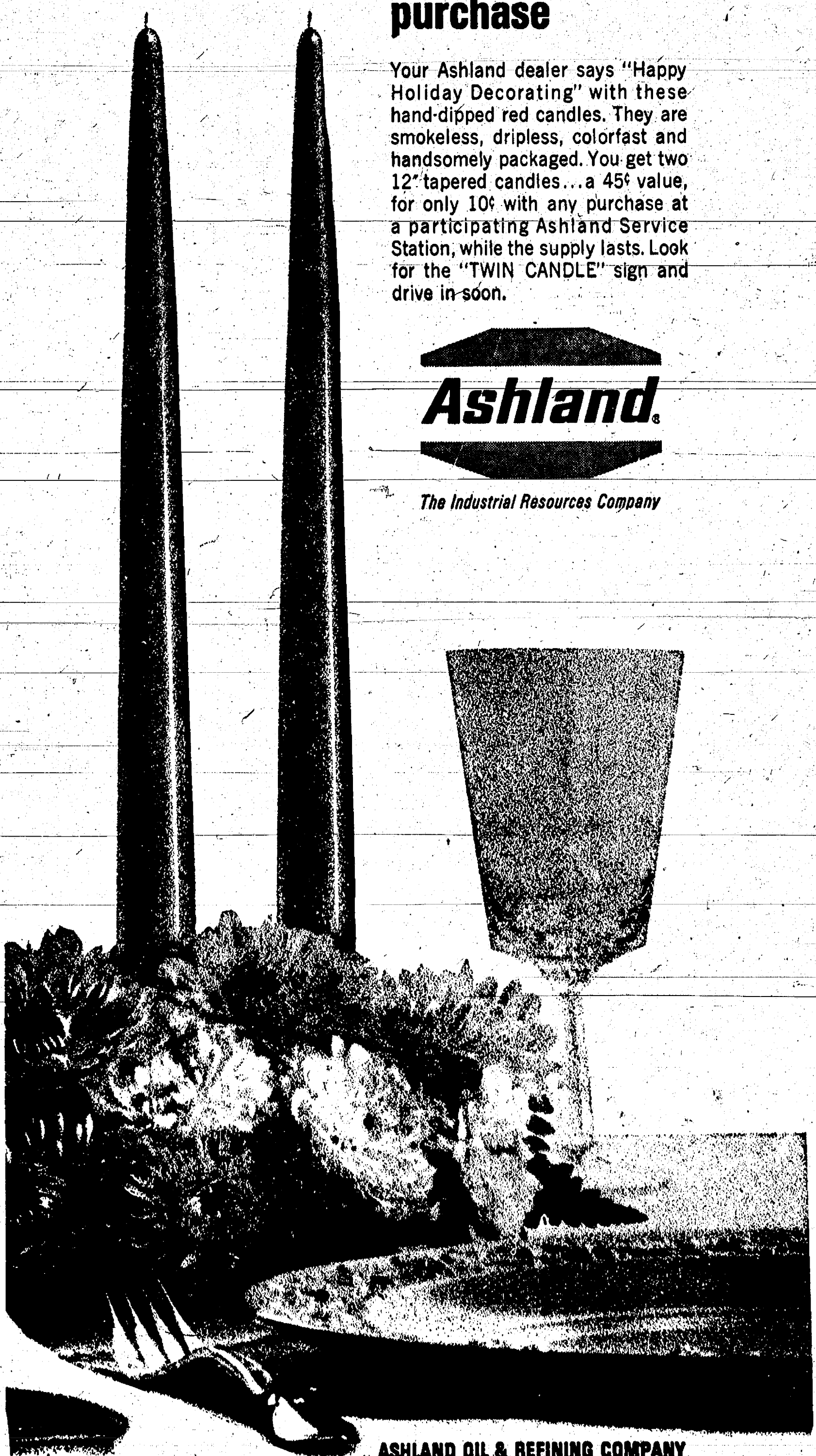
twin candle offer

two red candles only 10¢ with any purchase

Your Ashland dealer says "Happy Holiday Decorating" with these hand-dipped red candles. They are smokeless, dripless, colorfast and handsomely packaged. You get two 12" tapered candles... a 45¢ value, for only 10¢ with any purchase at a participating Ashland Service Station, while the supply lasts. Look for the "TWIN CANDLE" sign and drive in soon.

Ashland.

The Industrial Resources Company



ASHLAND OIL & REFINING COMPANY

Ads
Taken
Till 5 p.m.
Tuesday

IT'S EASY TO
BUY-SELL-RENT-
HIRE & FIND WITH

WANT ADS

Just
Phone
GR 5-3300

WANT ADS

The
Chelsea Standard

WANT AD RATES

PAID IN ADVANCE—All regular advertisements, 50 cents for 25 words or less, each insertion. Count each figure as a word. For more than 25 words add 2 cents per word for each insertion. "Blind" ads on box number add 50c extra per insertion. CHARGE RATES—Same as cash in advance, with 10 cents bookkeeping charge if not paid before 5 p.m. Five day preceding publication. Pay in advance—sent cash or stamps and save 15 cents. DISPLAY WANT ADS—Rate, \$1.10 per column inch, single column width only. Start at 10-point. 12th 22nd. CARDS OF THANKS or MEMORIALS—Single paragraph style, \$1.00 per insertion for 25 words or less. 2 cents per word beyond 25 words. Minimum, 1 inch. COPY DEADLINE—5 p.m. Tuesday week of publication.

TRAVEL TRAILERS—13-ft. and up; 10x55 ft. trailers. John R. Jones Trailer Sales, Gregory, Mich. Phone 408-2855.

SEE US for transit mixed concrete. Klump Bros. Gravel Co. Phone Chelsea 479-2712, 4950 Loveland Rd., Grass Lake, Mich. 4013

RUBBISH HAULING

Write
BILL MOUCH

1971 Doyle Rd., Gregory, Mich. Phone Gregory 498-2852

CUSTOM SPRAYING—Voco Interior white farm painting. J. L. Bird, phone 517-547-8447, Monticello Beach.

For your household and cosmetic needs call your

Fuller Brush Dealer

475-7130
420-8318

FOR RENT—Pleasant second-floor furnished apartment for two persons. 475-8469 after 6 p.m. 151f

KNAPP SHOES

For Cushion Comfort
At Factory to You Savings

For Appointment Call

Robert Robbins

475-7282

Authorized Representative

URGENTLY NEEDED—Full or part-time waitresses, especially daytime. Desirable for housewives wishing part-time employment. Paul Bunyan Restaurant, NO 2-6841.

FOR SALE—Puppies: Pomeranian female; Toy Fox Terrier, male, registered; part Poodle, male, \$10. Chihuahua, \$25. 3045 N. Lima Center Rd., Dexter, 479-2084/23

THURSDAY DEC. 5—Remember to keep this date open for St. Dunstan's Church Christmas Bazaar. Starting at 11 a.m. 22

RUMMAGE & BAKE SALE on Christmas cards at Sylvan Town Hall, Saturday, Nov. 23, 9 a.m. to 5 p.m. Proceeds go to Spaulding for Children. Please call 475-7233 for pick-up. 22

FOR SALE—One sow and eight baby pigs. 475-8763. 191f

ALLSTATE INSURANCE

AUTO • BOAT • COMMERCIAL
LIFE • HEALTH • HOME
LIABILITY

Phone Eves. or Week-ends for
N. H. MILES, Agent
GR 5-8334

Post Construction

In need of a building?
Let SHARON VALLEY
BUILD IT FOR YOU

John Livermore

Grass Lake, Michigan 49240
Telephone 517-522-8258

WANT ADS

CAR RENTAL by the day, week-end, week or month. Full insurance coverage, low rates. Call Lyle Christwell at Palmer Motor Sales, GR 5-3271. 22c

REAL ESTATE

Need Listings

Lake Property - Farms

Vacant Parcels

LOCAL SALESMAN

H. T. HAYNES

13835 Sauer Drive, North Lake
Phone 475-7157

EDWARDS REAL ESTATE
AD INSURANCE

Phone 482-5870

FOR SALE—Tent camping trailer, gear, tire, sleeps five. Call 479-2533 mornings. 211f

REAL ESTATE

Do you want a home or cottage on a lake, a farm or country home, a building site? We have them.

Eugene R. Young,

Broker

Phone 878-3792
Mary Allen, 879-3826
Virginia Visel, 426-2224

TREE REMOVAL DONE—Also buyers of standing timber and walnut trees. Chelsea 475-7633. 211f

WANTED—Steady employment driving ice cream truck and part-time plant work. Fine working conditions, good opportunity for veteran or man looking for change. Write Box SE 5, care of Chelsea Standard. 211f

FOR SALE OR TRADE—Two-year-old Guernsey heifer, call 475-8120. 191f

Unusual Opportunity

Large United States and Canadian Company in agricultural field urgently requires representative in this area for Crop Service Department. Applicant must have recent agricultural background and be well regarded in the area. Position is full time, or can be handled at first along with your present farming operation. Successful applicant can expect earnings from between \$1000-15000 weekly. With excellent opportunity for early advancement. Write Box No. 14, care of Chelsea Standard, Chelsea, and tell us about yourself. 22

Nurse-Aide Class

To Begin Dec. 5

18 years or older, average height and weight, rotating shifts, paid on-the-job training, \$2.07 per hour plus shift differential. Full fringe benefits.

Contact

Univ. of Michigan

Service Employment

Office

D-1118 North Outpatient Bldg.
University Medical Center
Ann Arbor

Phone 764-6152

JUST ARRIVED

TREWAX

The floor wax for every type floor.
Stop-in for a Free Sample.

Chelsea Hardware

FOR SALE—9x12 Broadloom rug. All over pattern. Like new. Phone 479-3741. 22

WANT ADS

PATRICK & COOK—Free estimates on aluminum siding, gutters, awnings, additions, roofing and general maintenance. Porch railing, aluminum storm windows and doors installed. Please call Chelsea 479-4633. 111f

BRITTANY PUPPIES for sale. Good pets, good hunting stock. Call 479-5881 after 6 p.m. 141f

K & D Kitley

Sanitation

Septic Tanks cleaned and installed.

Servicing Waterloo area for 14 years.

Free Estimates

Phone Munith 599-2186

A-1 USED CARS

'67 Galaxie 500 XL Hardtop

'60 Buick 4-door sedan

'65 Galaxie 500 4-door

'65 Falcon Bus

'65 Ford Station Wagon

'65 Mercury 2-door

'65 Ford 4-door

'65 Galaxie 500 2-door Hard Top

'65 Jeep 4 Wheel Drive Wagon

'64 Buick Convertible

'64 Ford 4-Dr. Hard Top

'63 Ford 6-Pass. Wagon

'63 Galaxie 500 2-door Hard Top

'63 Ford 2-door

'63 Falcon Wagon

'62 Ford 6-Pass. Wagon

'60 Ford 2-door

Thunderbirds

1966 Hard Top

1963 Hard Top

Trucks

'67 Chev. 1/2 Ton

'65 Ford 1/2 Ton

'65 GMC Handivan

'64 Ford 1/2 Ton

'60 Jeep with plow

'60 Ford stake

BEST SELECTION IN TOWN

PALMER FORD

Phone GR 5-3286

Open Mon., Wed. & Fri. Till 9:00

CARPETING

Ends of Rolls

1-11'x22', Green, Reg. selling pr. \$187.65 on sale \$128.95

1-12'x15'8", Red, Reg. selling pr. \$139.95 on sale \$95.00

1-10'7"x22'9", Green, Reg. selling pr. \$184.00 on sale \$129.95

1-12'x13'3", Reg. selling pr. \$138.00 on sale \$99.95

1-9'6"x11'11", Gold, Reg. selling pr. \$86.00 on sale \$59.98

1-11'x12', Blue, Reg. selling pr. \$224.25 on sale \$149.50

1-8'11"x11'7", Green, reg. selling pr. \$60.00 on sale \$39.98

1-12'2"x15'9", Red, Reg. selling pr. \$145.00 on sale \$94.50

1-6'10"x12', Red, Reg. selling pr. \$64.00 on sale \$34.50

1-Ozite Rem. 8'9"x12', Green, Reg. selling pr. \$56.00 on sale \$44.50

Ozite floor covering in Blue and Brown on sale, per sq. yd. \$3.88

Merkel Bros.

Help Wanted, Male and Female

Clerk Typist

Beginning salary \$4,600/year with one year experience, or \$4,251 with no experience, liberal vacation and sick leave benefits. Health and life insurance. Civil service retirement system. Periodic step increases. No discrimination in employment.

Apply personnel office

VA Hospital

Ann Arbor, Mich. 48105
Phone 663-8541, Ext. 232

Clerk-Typist

with the accent on typing

Enjoy the pleasant surroundings and many advantages that our bank offers. This immediate opening will provide a permanent position and a liberal salary.

Apply

Ann Arbor Bank

Corner Main and Huron Sts.
Ann Arbor, Mich. 22

Knapp Shoes

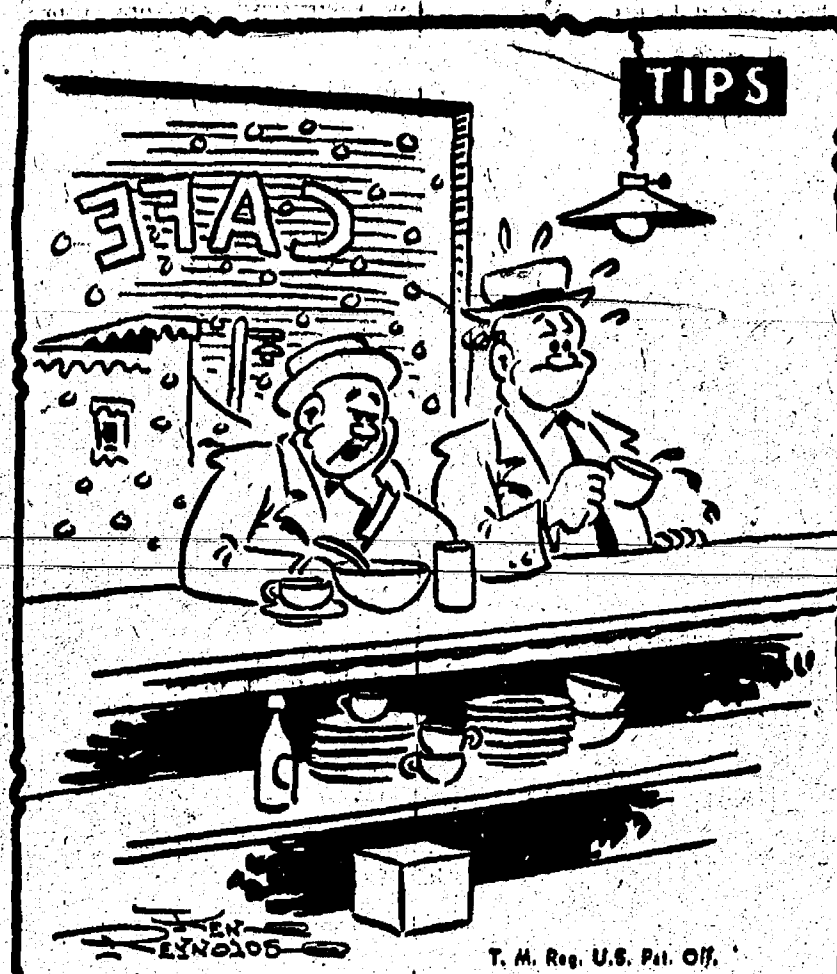
Cushioned Comfort Shoes for work, dress or recreation.

Call your Knapp Shoe representative, 475-8833, Walter Keizer. Specials every month. 24

FOR RENT—8 rooms unfurnished. 2 persons only. 419 E. Main, Stockbridge. 22

FOR SALE—1958 Olds, runs and looks good; upright piano, call after 6 p.m. 426-3861. 211f

FOR SALE—1964 Galaxie 2-door hardtop. Good condition. Ph. GR 5-8897. 22



"My wife ran into my boss today—he'll have to get another car in the Standard Want Ads, too!"

FOR REAL DOLLAR SAVINGS—Be sure and see us before you buy any new car. Palmer Motor Sales, Inc. Your Ford Dealer for over 50 years. 211f

Real Estate

Listings Wanted

FARMS, HOMES and LAKE PROPERTY

GREAT LAKES REAL ESTATE

Ph. 769-5630, Ann Arbor
Ph. 428-8120, Manchester

121f

FOR TRACTORS and equipment. Also New Holland machinery. Sales and service. Cobb & Schreier, Stockbridge. Ph. Ulysses 1-4251. 491f

Septic Tanks and Drain Fields

INSTALLED TO COUNTY CODE SPECIFICATIONS

Septic tanks from 300 gal. to 2,000 gal. available for prompt installation.

HILLTOP PLUMBING

BOB SHEARS
201 S. Main Phone 479-3851

CULLIGAN

There are 2 young, strong men we will hire for healthy, fresh air jobs. (Not salesmen.) In return for a day's labor, we give high wages, uniforms, insurance, profit sharing, pension, bonus, and commission, etc. It adds up to an immediate, responsible opportunity.

2321 Jackson Ave.
Across From Veterans Park

101f

SIDING, ROOFING and Remodeling since 1938. Trim work Alcoa. Wm. Davis. Phone 1-434-2533, Ypsilanti. 23

FOR SALE—Year-old female German Shepherd, AKC registered, all shots, excellent with children. \$75. 479-7296. 151f

LOSE WEIGHT safely with Diet Tablets. Only 98 cents at Chelsea Drug. 22

APPLES, Jonathan Red and Golden Delicious. Sweet cider made fresh every Friday. 85 cents gal. 75 cents gal. in your container. Czaplak's Orchard, open 7 days from 6 p.m. 1817 Rank Rd. GR 9-6468. 23

MILLIONS of rugs have been cleaned with Blue Lustre. It's America's finest. Rent electric shampooer \$1. Dancer's, Chelsea. 22

'66 DODGE Charger for sale, excellent condition. Ph. 476-7267. 23

-FOR SALE-

1-ACRE BUILDING LOT, well-located, in Sharon Township. Terms available.

2 LOTS on Spring Lake.

MODERN 4-BEDROOM Chelsea home. 2-car garage. In excellent condition.

CROOKED LAKE—2-acre lot, approximately 250 feet lake frontage. 2-bedroom modern brick home, fireplace, full basement, oil furnace, 2-car garage, 2-bedroom frame guest house, 5 boats. Immediate possession.

NO RENTALS — SOLD OUT OF FARMS Have Buyers Waiting! List your property with Miller—fast, efficient service.

R. D. MILLER

REAL ESTATE BROKER

Office: 15775 Cavanaugh Lake Road

Post Office Box 581 Chelsea, Michigan

Phone: GR 9-5892

WANT ADS

CAR & TRUCK LEASING. For details see Lyle Christwell at Palmer Motor Sales, GR 5-3271. 491f

AIRLESS SPRAY PAINTING Interior and exterior, Finckney 878-3246. 251f

USED TRACTOR TIRES—Large inventory on hand. Also used passenger truck - Kender tires. Jackson Tire Brokers, M-100, Munith, Mich. Ph. 506-2925. 821f

CLOGGED SEWER

Reynolds Sewer Service

Ve. Clean Sewers Without Digging Drains Cleaned Electrically

FREE ESTIMATES

2-YEAR GUARANTEE

Phone Ann Arbor NO 2-0277

Sewer Cleaning Is Our Business—Not a Side Line! 882f

VACUUM CLEANERS—Electrolux authorized sales and service. James C. O'Connell, Manchester. Ph. 428-2881 or 428-8121. 431f

PIANO TUNING, Chelsea, and area. Facilities for reconditioning and rebuilding. Used piano sales, reconditioned grands and verticals. E. Eklund, 426-4429. 501f

FACTORY HELP WANTED—All categories. Apply in person. Fortune Industries, 11770 Dexter-Chelsea Rd., Chelsea. 421f

REAL ESTATE FOR SALE

FOUR-BEDROOM older home. Full basement, 2-car garage. Shady lot. \$16,000. Terms.

COUNTRY HOME—4 bedrooms, 2 full baths. Remodeled kitchen with built-in range, oven and dishwasher. Full basement. Breezeway, patio, large garage, 2 acres. \$55,000.00.

7 1/2 ACRES—All within the Chelsea village limits. Has village water, gas and electric and 745 ft. of railroad frontage. 3-bedroom house and garage included. \$28,000.

NEW LISTING—3-bedroom older home in a pleasant residential section. 2 baths. Carpeting. Basement. Gas heat. Newly redecorated. \$17,500.

BUILDING LOTS

EAST OLD US-12—2 acre lot, \$5,500.00.

NORTH LAKE AREA—Several to choose from, \$3,500 to \$4,500 choose from, \$3,500 to \$4,500.

LAKEFRONT—2/3 acre with frontage on North Lake, \$6,000.

COMMERCIAL LOT—West Middle Street 66'x132' adjacent to business district.

15 ACRES OF WOODS—\$15,000.

CLARENCE WOOD

BROKER
646 Flanders St.
Phone 479-4603

WANTED TO BUY, spruce trees. Call 475-8120. 181f

REAL ESTATE FOR SALE

4-BEDROOM HOME, 2 1/2 baths, large basement, gas heat. Large lot. 2-car garage.

4-BEDROOM HOME with basement, gas heat On large lot. 2-car garage.

1 ACRE with 3-bedroom home. Modern kitchen, 1 1/2 bath, 2-car garage. Well landscaped. Aluminum siding. On black-top.

3 ACRES with 4-bedroom modern home. Needs some repairs and decorating. On black-top.

VACANT LAND

10 ACRES joining Village of Chelsea.

32 ACRES on Old US-12 west, joining Village of Sylvan.

RANCH TYPE 3-bedroom home, 1 1/2 car garage. In Chelsea.

Kern Real Estate
Phone 475-8568

For Sale

Single and double strength window glass in all commonly used sizes. We reset glass in wood and aluminum frames, no charge for cutting to size. We have plate glass for shelving, etc.

GENERAL ELECTRIC BULBS We stock all generally used bulbs and fluorescent bulbs. Special prices in large quantities.

Merkel Bros.

FOR SALE—Puma Hardtop camper, sleeps six, has LP cook stove, dinette, wired for 110 and 12 volt lights, spare tire. Ph. 475-8118. 22

WANT ADS

FOR SALE—One used 1968 Ski-Doo snowmobile, perfect condition. District Sales and Service, 18100 M-52, Chelsea. Phone 479-8120. 191f

WANT ADS

SON Barber Shop in Chelsea will be closed today and Friday, Nov. 29 and 30, after Thanksgiving.

SALE by owner, 4-bedroom, carpeted, drapes, built-in refrigerator, double-oven stove, living room, dining room and kitchen, antique chest, table and chairs, sectional sofa and sewing machine. 238 Harrison, Chelsea, phone 479-1028.

RENTAL SERVICE to land-reliable tenants waiting. Daniels Realty, 7030 Dexter-Pinckney Rd., HA 6-4090.

SALE—1967 Pontiac Firebird, 300 miles, excellent condition, high camper for pick-up with wood panel like new, with wood panel like new, with wood panel like new. John Deere row corn picker. Reasonable. evenings 470-3812.

WANT ADS

1967 CHRYSLER convertible, black on red, power steering, power brakes and white walls. Other extras. Save at winter prices. 475-8041 Ext. 57 before 4:30 p.m., 475-4821 after 4 p.m. and week-ends.

FOR SALE—'51 Chevy 1½-ton truck with grain and stock rack. '59 Dodge ¼-ton, 4-speed transmission, motor needs repair. Ph. 428-3692 and 475-4878.

FOR SALE—Console TV, mahogany cabinet. Good condition. Ph. 475-3759 after 5 p.m.

FREE REAL ESTATE CLASSES. Daniels Realty, 7030 Dexter-Pinckney Rd., HA 6-4090.

WANTED—Bus Drivers, Male or Female. Starting pay \$3.10 per hour. Apply in person, 2710 Baker Rd., Dexter.

FOR SALE—Seven weaning pigs. Ph. 470-7134, evenings.

WANT ADS

HOUSES FOR SALE—2-3 and 4-bedrooms, newly decorated, \$49 down. We buy homes. Art Daniels Realty, 7030 Dexter-Pinckney Rd., HA 6-4090.

FOR RENT—Modern country home near Stockbridge. References: Call Stockbridge 851-2861.

WOULD YOU LIKE to help the future farmer boys make some money? Then donate a small chicken house or brooder house and an electric poultry project and we need your help. 475-8241.

FOR SALE—2 black, registered, miniature poodle puppies, male, 4 weeks old, would make wonderful Christmas gift, \$50 each. Ph. 475-8241.

FOR SALE—6-room house with new gas furnace, deep well, on 3 acres more or less, with fruit trees, 1½ miles south of Stockbridge on M-52. With some terms. Also have building lots for sale on terms available. Phone 851-4280.

FOR SALE—13 feeder pigs. Ph. 475-8410.

FOR SALE—6 feeder pigs, 6 weeks old 0710 Weikner Rd. Ph. GR 5-8339.

FOR SALE—Turned log walnut dining room table, 1 leaf, 6 chairs; rose holly living room suite. Phone GR 5-2752.

FOR SALE—Child's pool table, portable record player, 2 aluminum storm windows 30x58, several 15" white wall tires, misc. GR 5-2752, 221 E. Middle St.

FOR SALE—Walnut double bed with Stearns & Foster Ortho-Posture mattress. Excellent condition, less than one year old, \$60. Ph. 470-4408.

WANTED—Dairy tester, part or full-time; excellent for semi-retired dairyman. Will provide technical training. Contact Cooperative Extension Service Office, County Building, Ann Arbor, phone 663-7511, Ext. 227.

FOR RENT—Large downstairs apt. Garage and utilities furnished. Adults only. Ph. 475-8809.

FOUNTAIN MANAGER, full-time at Chelsea Drive. Hours: 8 to 4. No Sundays or nights. Contact D. Murphy, phone 475-4811.

FOR RENT—1-bedroom, furnished apt., including utilities, \$95 per month. Adults, no pets. 475-8824, 311 South St., Chelsea.

WANTED—Woden duck decoys, one or more. 568-8101.

HOME ACCIDENTS

Home accident deaths in the United States in 1967, totaled about 28,600, according to the National Safety Council. More than one-third of those killed were persons 75 years old and older. Falls caused about two-fifths of the deaths, with fires and other types of accidents accounting for the rest.

Air conditioning today costs about one-third of its price 10 years ago. Air conditioning not only makes a home more comfortable; it adds to the resale value.

Men's Suit Sale

Now on at Dick Butler Clothing Store . . .

O.P.S. in Grand Ledge.

Tremendous Selection

Our \$50 Suits now 2 for \$51

Our \$60 Suits now 2 for \$61

Our \$70 Suits now 2 for \$71

All sizes thru 46. Regulars, longs and shorts. If you don't need two suits, bring a friend, divide the cost and share the savings.

Michigan Bankard good at Dick Butler's O.P.S.

Opposite Police Station in Grand Ledge, Mich. Open Friday nights 'til 9. All other nights 'til 6. Open Sundays 12 to 5.

Thanksgiving Time . .

This special day of Thanksgiving is a time when we should slow down and give thanks for the many blessings we are more or less aware of all year long but for which we seldom take the time to be truly thankful.

High among the many things I have to be thankful for is the friendship, loyalty and co-operation that exists among the 16 of us working together here at Spaulding Chevrolet.

This is the spirit of comradeship that makes a rather hectic business enjoyable and it is in appreciation of this spirit that I make the following

ANNOUNCEMENT

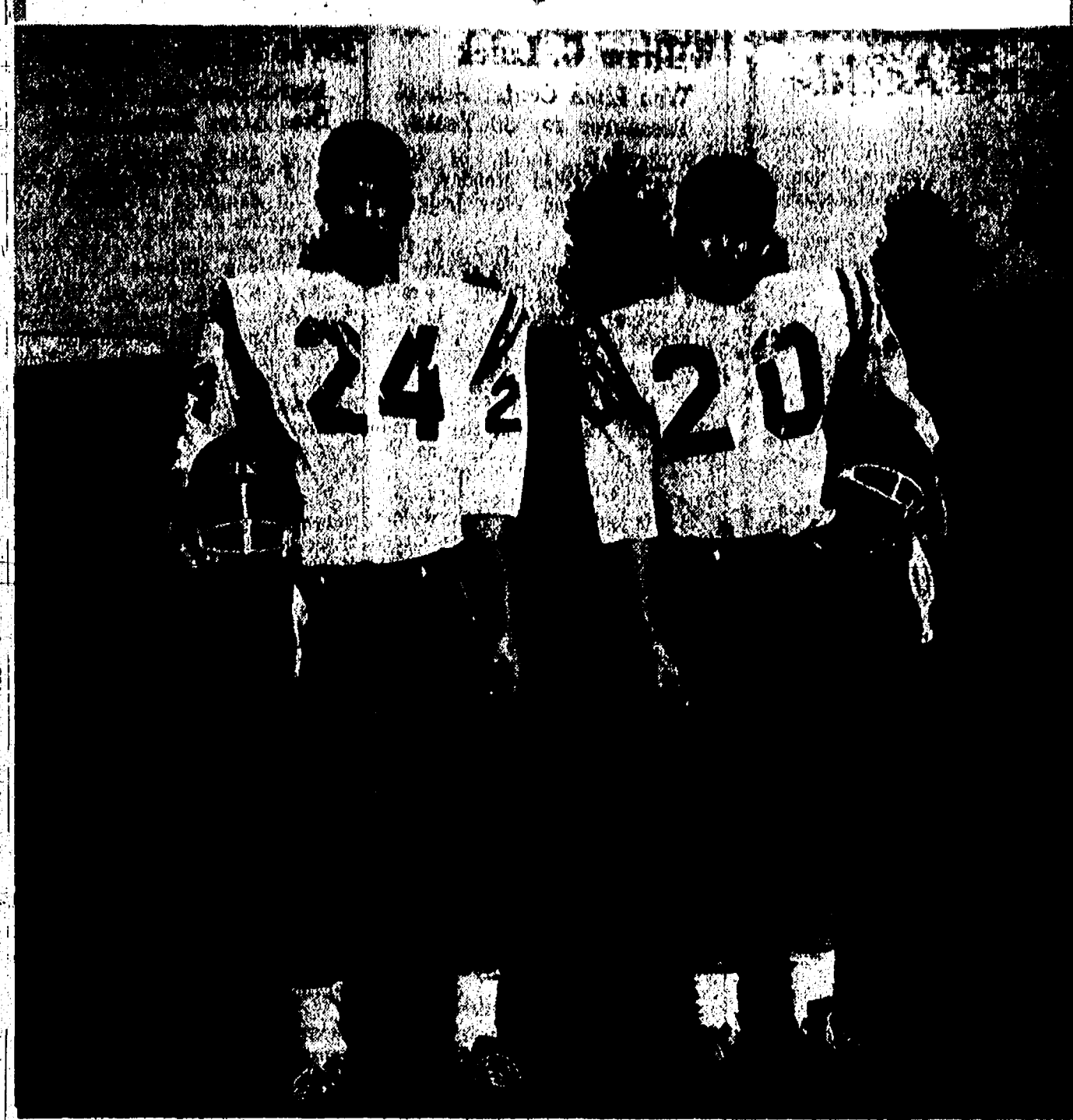
Spaulding Chevrolet Sales & Service

WILL BE CLOSED

NOV. 28 THRU NOV. 30

—Rolly Spaulding

Gridders of the Week



RODNEY HOULE, senior defensive halfback for the Bulldogs, just completed his first, and last, year with the varsity team. He was a football trainer for three years before he decided to join the team he trained. Besides football, Rodney has played second base on the baseball team for three years and will be found there again this spring. He stands 5' 9" and weighs 145 pounds. After school hours, Rodney enjoys skiing and hockey, and belongs to varsity, key and ski clubs. His favorite subjects are conservation and Michigan history. Next year he plans to major in conservation at Northwestern Michigan College in Traverse City. He lives with his parents, Mr. and Mrs. Robert Houle, at 130 Grant. One of his five brothers, Lynn, is a freshman at Chelsea High school.

ART FARLEY, No. 20, is a member of the varsity squad for the first time this year. This junior flanker has played football since he was in the seventh grade. Among his past positions are end, defensive halfback and tailback. Two other sports claim his time. He has played basketball since seventh grade and baseball since ninth grade. This 5' 9", 140-pound athlete occupies the position of shortstop during baseball season. He belongs to trip, varsity, key and ski clubs and enjoys mechanical drawing. In his spare time he does a little snow and water skiing. After graduation he would like to study industrial arts at college. His one brother, Curt, is a senior in college now. He lives with his parents, Mr. and Mrs. Curtis Farley, 153 Van Buren.

IN THE OPEN

By Lee Smits



At this season the most dangerous animal in the world is loose in Michigan—man, the hunter—shedding most of the brittle layer of civilization he has recently acquired. As a matter of fact, this carnivore is not as deadly as many people think he is. There is more risk in the journey to and from the hunting grounds than there is on the scene.

Statistics show that the more hunters there are per square mile the less likelihood there is of any one of them getting accidentally shot. In territory where anything moving in the woods is expected to be human, everybody is extra careful.

A study of this formidable creature, the hunter, reveals that there are numerous species—and-sub-species, ranging from one who preys on rabbits to the grim specimen intent on bear.

Taking up those who pursue deer, we might attempt a classification, starting with the type that actually hunts deer. Although no accurate figures are available, it is fair to assume that maybe 25 percent of deer hunters hunt deer. Thousands of others are content to be free of domestic bondage, happy to let their whiskers grow and to sit up all night playing poker. Their hunting consists of brief strolls along a road, then back to the warm camp.

The deer killer can usually be identified by his costume. His clothing shows signs of wear. He does not wear his trousers legs stuffed into tall boots. He does not display a hunting knife big enough for a canoe paddle. He wears no canvas to produce a rattle in the brush.

The authentic deer hunter hunts, intensively, from the instant he steps outdoors, not waiting until he reaches some favorite spot in the woods. No matter how long he has owned the same rifle, he sights it in every year before going north. He takes mild pride in his ability to dress out a deer and hang it up, or at least haul it into position to drain properly.

He does not shoot at porcupines, ravens or woodpeckers. He would much rather pass up a shot at a deer than to shoot at something he hoped might be a buck. If he returns to camp with a deer's heart and liver impaled on a forked stick he probably learned deer-hunting with backwoods natives.

Mr. Smits' column is presented through the courtesy of the Michigan Consolidated Gas Co.

THANK YOU—

I wish to thank my friends and neighbors for their flowers and cards sent to me at St. Joseph Mercy Hospital; also Rockwell-Standard for their flowers and Pastor Frinkle for his call.

John A. Myers.

THANK YOU.

I wish to thank my friends, neighbors and relatives for their kindness to me while I was in the hospital.

Olive Salzgeber.

THANK YOU

I wish to thank my friends, neighbors and relatives for cards, flowers and visits during my recent stay in the hospital.

Olive Salzgeber.

If you shop several stores for their "good buys," you can save money. But you will also be exposed to a variety of merchandise you perhaps didn't intend to buy. So, shop wisely.

Michigan Standard for Drunk Driving Limit Exceeds Federal Level

Lansing—The new federal safety standard for the alcohol level on drunkenness poses a real problem to Michigan's newly-elected legislature, said Secretary of State James M. Hare.

Present definition of drunkenness in Michigan specifies that a person must have 0.15 percent of blood alcohol. But the new federal standard is substantially lower—0.10 percent of blood alcohol.

The new federal safety standard, said Hare, was set by the U.S. Department of Transportation and should take effect by 1971. In the event Michigan does not concur, federal highway funds allocated to Michigan could be cut by 10 percent, which means a multi-million dollar slash.

There are two sides to every law suit, the legal and the moral side.

TODAY'S THOUGHT

By LOUIS BURGHARDT

Thanksgiving thoughts . . . Regardless of individual needs, wants, possessions or lack of them, every one of us should give thanks for being Americans, living in America.

We in America represent only 6% of the world population. Figured in percentages, we have these approximate figures for every 1000 people on earth. 60 people are Americans. 940 people represent the rest of the world. The 60 Americans receive ONE HALF the world's income; the 940 non-Americans receive the other half. The LOWEST income group in the 60 Americans would be far above the average income of the 940 non-Americans . . . The 60 Americans have an average life expectancy of 70 . . . the 940 non-Americans would average less than 40 . . . The 60 Americans consume 15% of the world's food supply . . . The 60 Americans have 12 times as much electricity . . . 22 times as much coal . . . 21 times as much oil . . . 50 times as much steel . . . 50 times as much general equipment (industrial and home) . . . The comparisons are endless . . .

When you give thanks to God for your individual blessings at Thanksgiving, wouldn't it be fitting to express gratitude to Him for His numberless mercies . . . and especially for His placing you in the group of 60? . . . BURGHARDT FUNERAL HOME, 214 East Middle St., Chelsea, Mich. Phone GR 5-4141.

—SPECIALS—

ALL FLAVORS MILLER'S

Ice Cream . . . ½ gal. 69c

ECKRICH

Roasted Sausage . . lb. 69c

ICE BOX JAR

Stuffed Olives 44c

PKG. OF 12 SCHAEFER'S BROWN 'N' SERVE

Rolls 2 pkgs. 55c

1-LB. PKG. VALAMONT

Strawberries 33c

KUSTERER'S

FOOD MARKET

DIAL GR 9-3331 WE DELIVER

BANK AUTO LOANS ARE BEST!

ANY TRIP YOU MAKE will be more pleasant, if the car you drive is financed the Bank Way—economically, conveniently and with local people.

CHRISTMAS CLUB MEMBERS:

Last payment on 1968 Christmas Club was due Nov. 9. Checks will be mailed out about Nov. 20.

5% On Certificates of Deposit

4% On Savings Passbook Accounts

CHELSEA STATE BANK

Member Federal Reserve System

Member Federal Deposit Insurance Corp.

MILK

Bring on the Milk!

It's snack time!

The call goes out for milk and more milk when the youngsters take time out for an energy-building snack. Be ready!

WEINBERG DAIRY

QUALITY PASTEURIZED DAIRY PRODUCTS

Old US-12 Phone GR 5-5771

Chelsea Hardware

110 South Main St. Phone GR 9-6311

SUPERB QUALITY PRO GREAT VALUE

SIZZLER SALE

FAN FORCED AUTOMATIC HEATER

SALE PRICE **999**

REG. \$14.95

Ideal for chilly evenings and supplemental heating. Automatic temperature control—for maximum room comfort.

COLUMBIAN ENAMEL ROASTER

ROASTING RACK

SPECIAL 199

Family size. Will hold a 15-lb. fowl, or 18-lb. roast. Built-in gravity well. Easy to clean.

Adjustable 7 position rack for all size meats. Easy clean chrome plated steel. 11x12".

30-CUP ELECTRIC PERCOLATOR

SPECIAL 999

Ideal for entertaining. Completely automatic. Signal light glows when coffee is ready. Urn shaped easy clean polished aluminum shell. Cord included.

PROVEN 1/4" DRILL

SALE PRICE 999

SAVE \$9.00

This drill incorporates oil retaining bearings and balance adjustment for better service. Features 2-amp motor and lock type trigger switch. UL listed.

PROVEN TORCH KIT

SPECIAL 587

New fluted design head and valve body with dial flame control. Features 15 hour cylinder.

HAND MIXER

SPECIAL 987

ONE YEAR GUARANTEE

3 speed control to stir, mix, whip or beat. Features fingertip selector and lifetime lubricated motor.

COOKIE SHEET & CUTTER SET

SPECIAL 99c

Contains 14x10" aluminum cookie sheet and five aluminum cookie cutters.

DOUBLE BED SIZE ELECTRIC BLANKET

1188

Eight automatic comfort settings. Machine washable. 80% rayon, 20% cotton. Attractive pastel color. Size 72x84"

MAKE YOUR CHRISTMAS SHOPPING EASIER

USE OUR LAY-AWAY PLAN

MEMBER PRO HARDWARE STORES

Community Calendar



Regular meeting Herbert J. McKune Unit No. 31 American Legion Auxiliary Dec. 31, 6:30 p.m. Pot-luck \$1 gift exchange. Note change of place.

Social meeting, VFW Auxiliary Monday, Nov. 25 at 8 p.m. at the Rebekah hall.

OES Amway party scheduled for Nov. 21 has been postponed.

Thursday, Dec. 5, Remember to keep this date open for St. Barnabas church Christmas Bazaar beginning at 11 a.m. adv22

Bake sale Saturday, Nov. 23 at Patty Ann Shoppe, beginning 8:30 a.m. sponsored by the evening chapter TOPS. adv22

Modern Mothers Child Study club at the home of Mrs. John Steele Nov. 26 at 8 p.m. and recipe exchange. Program, "Christmas Decorations," by Marietta Satterthwaite. Guests invited.

Agricultural Entrepreneurs meeting scheduled for Thursday, Nov. 21, at Harold Weeks postponed until further notice.

Women's Farm Bureau Committee at Farm Bureau Building, Saline-Arbor Rd., Thursday, Nov. 21, 11 a.m., with noon pot-luck. Each member invite city friend. Program, entertainment and speakers.

Community Choir Monday 8 p.m., St. Paul's UCC. 18th

Inquiries regarding the Chelsea blood bank may be directed to Harold Jones of Central Fibre Products in the event that Mrs. Dudley Holmes is unavailable.

TOPS club every Wednesday from 12:30 to 2:30 p.m. in the Rebekah hall. Call GR 5-8362. For night meeting call GR 9-3251.

Senior citizens would like your new left-over pieces of fabric for making lap robes. Leave at Korner House Tuesday afternoons.

Sylvan Neighborhood club at the home of Mrs. Oscar Widmayer, Nov. 21, 2 p.m.

Parents Without Partners Friday evening, Nov. 15 at 8:15 p.m., St. Andrew's Episcopal church house, 306 N. Division St., Ann Arbor. Speaker of the evening, Judge Francis O'Brien of Washtenaw Juvenile Court. Question and answer period following.

Spaulding for Children Auxiliary will hold a rummage and bake sale Saturday, Nov. 23 from 9 a.m. to 5 p.m. at the Sylvan Town Hall in Chelsea. Items will be collected there from 9 a.m. to 8 p.m. Nov. 22. Special Spaulding Christmas cards will also be available. adv22

Bake sale Dec. 14 from 10 a.m. to 2 p.m. by the Terrific Tailors 4-H club, Sylvan Town Hall, adv25

Easter Chapter of the congregational church Nov. 21 8 p.m. at the parsonage with Mrs. Dan Kellin as hostess.

Chelsea Suburbanettes Thursday, Nov. 21 at home of Mrs. James Gaken. Craft night, bring scissors and glue.

American Legion and Auxiliary hospital equipment available by contacting either Mr. or Mrs. Eugene Martin, at 475-5867 after 4 p.m.

Senior citizens birthday party with pot-luck, 6:30 p.m., Nov. 21, business meeting Nov. 26, at 7:30 p.m.

Cards every Thursday afternoon at Korner House.

Nickel Carnival sponsored by Chelsea High school Nov. 23, 1 to 7 p.m., high school gym.

St. Mary Christmas Bazaar and bake sale Dec. 7 at K. of C. hall. adv22

THREE COLORS
If you are planning to decorate or paint a room, keep your color selection down to three. Select the colors for your walls and ceilings first. These colors can contrast with a different floor color. Use the third color for accents in furniture cover and small objects in the room.

Before saying "never" remember "never" is a long, long time.

Dexter Man Killed in Farm Accident

Gerald R. Collige, 6190 W. Joy Rd., was fatally injured in an accident on the William Nixon farm near Stockbridge, Wednesday, Nov. 13.

Collige, 30, was a former resident of the Bellevue and Vermontville areas, and had moved with his family to Dexter only two weeks prior to when the accident occurred. He was employed by Neil and William Nixon.

At the time of the accident he and William Nixon were working in adjoining fields, Nixon on a tractor and Collige loading corn from a wagon onto a truck using a mechanical elevator. Nixon observed the elevator malfunctioning, rushed to the scene of the accident then called an ambulance from a nearby farm house. Deputy medical examiner Edward Montgomery was called to the farm.

Born Aug. 9, 1938, in Battle Creek, the son of Joseph and Christina Plotner Collige, he was married to Alice Lake June 25, 1960 in Bedford. Until April he had been employed by the Fisher Body Division of General Motors in Lansing.

Survivors, in addition to his wife, include two sons, Ronnie, 8, Tod, 7, and two daughters, Susie, 1, and Pammy, 3. His father who resides in Augusta, two brothers, Joseph of Battle Creek and Jerome of Nashville.

Funeral services were held at 1:30 p.m. Saturday, Nov. 16 at the Lehman Funeral Home, Bellevue. The Rev. Harold Belgie of United Missionary church, Battle Creek officiated. Burial was in Newton Township cemetery, south of Bellevue.

Lirette Verdict...

(Continued from page one)

Borders had been pursuing him for 10 miles on winding country roads and was killed when his car hit a tree.

Lirette, who had a long history of traffic convictions, was sentenced by Circuit Court Judge James Breaker.

Borders, 28 at the time of his death, lived at 333 Elm St., with his wife and daughter.

For the home located beyond municipal water mains, the best fire protection is plenty of water delivered by an adequately sized electric water system. An effective fire-fighting water delivery requires from eight to 10 gallons per minute.

DEATHS

William G. Luick

Was Lima Center School Treasurer for 30 Years

William G. Luick, of 10701 Jackson Rd., died Monday, Nov. 18 at the Huron View Lodge in Ann Arbor.

Mr. Luick was born Oct. 5, 1885 in Lima township to Henry H. and Jennie Geddes Luick. He married Clara Kaercher Jan. 1, 1912 in Lima township. They lived all their married life in this area, where he was a farmer.

He belonged to St. Paul United Church of Christ and the former Knights of Pythias. He was the Lima Center school treasurer for 30 years.

He is survived by his widow, Clara; three daughters, Mrs. Grace J. Blackmore, Battle Creek; Mrs. Carl (Ruth) Peterson, Battle Creek; and Mrs. Richard (Barbara) King, Ann Arbor; six grandchildren; six great-grandchildren; and one nephew, Dr. M. G. Wood, Hart, He was preceded in death by his son, Howard; a brother, Harold; and a sister, Mrs. Eva Wood.

Funeral services were yesterday at the Staffan Funeral Home with the Rev. Warner Siebert officiating. Burial was in Oak Grove Cemetery. Arrangements were by Staffan Funeral Home.

Mrs. Edith L. Irwin

Dies Unexpectedly Last Wednesday in Ann Arbor

Mrs. Edith L. Irwin, 81, of 232 Jefferson St., Chelsea, died unexpectedly Wednesday, Nov. 13 in Ann Arbor.

Mrs. Irwin was born July 9, 1887 in Sharon township, a daughter of L. Benjamin and Harriet Merriman Lawrence. She was a member of the Chelsea Methodist church, and had been employed in the clerical department of the University of Michigan for many years.

Surviving are two sons, Fred, of Chelsea; Donald Irwin of Grass Lake, and two daughters, Mrs. A. G. (Maxine) White of Grass Lake and Mrs. Albert (Jean) Johnson of Benton Harbor. Also surviving is a brother, George Lawrence of Chelsea, eight grandchildren and three great-grandchildren.

Funeral services were held at the Buighardt Funeral Home at 11 a.m. on Saturday, Nov. 16, with the Rev. Robert Worgess officiating. Cremation followed.

High flying causes more than airplane accidents.

Joyce Marie Trinkle

Eight-Year-Old Lima Girl Dies After Long Illness

Joyce Marie Trinkle of 9631 Trinkle Rd., Lima township, eight-year-old daughter of Charles W. and Patricia J. Miles Trinkle, died Tuesday morning at her home after a long illness.

She was born Aug. 27, 1960, in Ann Arbor. She was a member of the Dexter Gospel church and also a member of the Brownies of the Girl Scouts. Joyce was a second grade student at Bates Elementary school. She had attended Dexter-Chelsea Co-op Nursery for two years prior to entering school.

Surviving, in addition to her parents, are one sister, Cheryl; three brothers, Donald, Duane and Darrell; her paternal grandmother, Mrs. Wilbert (Hilda) Trinkle of Dexter; her maternal grandparents, Mr. and Mrs. Walter Miles of Flint, formerly of Dexter; her great-grandfather, William Miles of Carleton; several aunts and uncles. She was preceded in death by her grandfather, Wilbert Trinkle, Dec. 4, 1966.

Funeral services will be held Thursday afternoon (today) at 2 p.m. Nov. 21, at the Dexter Gospel church with the Rev. Henry A. Campbell officiating. Burial will be in Forest Lawn Cemetery.

Friends may call at the Hosmer Funeral Home until 10:30 a.m. Thursday, and from noon until service time at the church. Memorials may be made to the Dexter Gospel church in Joyce's name. Envelopes available at the funeral home. Arrangements are by the Hosmer Funeral Home.

Thomas F. Ashley

Had Lived at North Lake Until Three Months Ago

Thomas F. Ashley, 80, of 118 E. Middle St., Chelsea, died at St. Joseph Mercy Hospital, Ann Arbor, Wednesday, Nov. 18 where he was taken following a heart attack suffered earlier in the day. Born April 8, 1888 in Keokuk, Ia., he was a son of Thomas and Molly Malone Ashley. He was married to Clara Hager who preceded him in death April 6, 1962. He had made his home at North Lake until coming to the Chelsea address about three months ago. Mr. Ashley had worked for Penberthy Injector Co. in Detroit until his retirement about 15 years ago, when he came to North Lake. He was a member of North Lake Methodist church. Surviving are two sons, Herman

BIRTHS

A daughter, Cynthia Ann, Tuesday, to Mr. and Mrs. William L. Siegfried, Chelsea.

A son, Gary Patrick, Nov. 15 at Foot Hospital in Jackson, to Mr. and Mrs. Clinton Schultz of Clinton, formerly of Chelsea.

A daughter, Crystal Lynn, Nov. 16, to Mr. and Mrs. Warren Porath, Jr., 13880 McKinley. Paternal grandparents are Mr. and Mrs. Warren Porath, Sr., 10280 Hadley Rd. Maternal grandparents are Mr. and Mrs. T. A. Johnson of Cleveland, O.

A daughter, Catherine Marilyn, Nov. 12, to Mr. and Mrs. Robert L. Shepard.

A son, Bryan Edward, Nov. 20, to Mr. and Mrs. Sidney L. Robinette, Chelsea.

Ashley of North Lake, and Lawrence Ashley of Detroit, and a brother, Carl Ashley of San Francisco, six grandchildren and three great-grandchildren.

Funeral services were held at 1 p.m. Saturday, Nov. 16 at the Burghardt Funeral Home, with the Rev. George T. Nevin officiating. Burial followed Monday, Nov. 18 at Woodmere Cemetery, Detroit.

Gambles
The Friendly Store

STOP FROZEN PIPES!
USE WRAP-ON ELECTRIC HEAT TAPES

NO TIME LIMIT
FREE REPLACEMENT GUARANTEE!

Sold at GAMBLES

ENROLLMENT FORM Chelsea Recreation Program

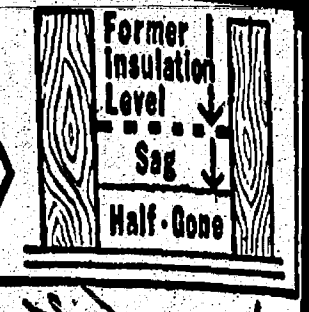
Complete coupon and mail to Tom Balistrere, 255 Park St., Chelsea, Mich. 48118.

Name _____ Age _____
Address _____
Class or Classes _____
Date _____

Do NOT enclose fee with registration.

**MAYBE YOU ONLY THINK
YOUR HOME IS INSULATED!**

"Insulation Sag" is a heat thief!
Insulate Your Insulation Now!
Costs Little, Pays Big!



DO IT YOURSELF and SAVE 1/3

You can slash your fuel bills up to 40% this winter by insulating with Zonolite brand Vermiculite. And you can save many dollars more by choosing this famous Vermiculite insulation. It's so lightweight, clean and dust-free that you can install it easily yourself. Just open bag and pour between joists of your attic. No blowing equipment—no mask—no gloves. Plan now to insulate your home the dollar-saving way—with Zonolite!

AS LITTLE AS **\$67.60** TO INSULATE AVERAGE HOME

ZONOLITE
FREE! Get Our LOW MID-SEASON Estimate Now!

DIAL GR 5-3391

CHELSEA LUMBER CO.

"Where the Home Begins"

Colorful "Country Inn"

West Bend's elegant cook-and-serveware in popular Avocado or new golden "HARVEST"



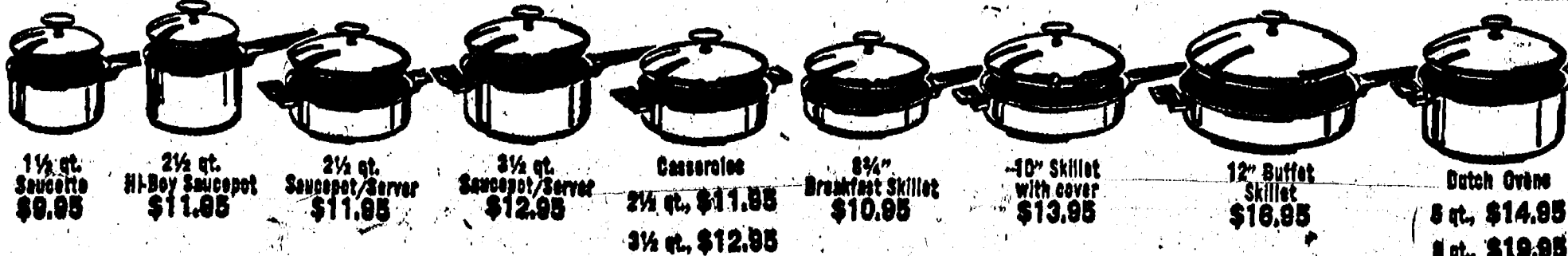
FAMILY / HOMEMAKER SET
Includes 1 1/2 qt. Saucepot, 2 1/2 qt. Hi-Boy Saucepot, 10" Skillet, 5 qt. Dutch Oven (with cover that fits the skillet, too), and 40-page color Recipe Booklet.

\$39.95
COMPLETE SET



Here's Country Inn by West Bend... each piece extra-thick aluminum for smooth even cooking. Colorful Avocado or Harvest porcelain outside — color that won't ever fade, even if you wash it day-in-day-out in an automatic dishwasher. Inside, it's double coated with no-stick, never-scour black Teflon. Teflon II resists scratching, welcomes your favorite metal spoons and spatulas.

OPEN STOCK:



1 1/2 qt. Saucepot \$6.95
2 1/2 qt. Hi-Boy Saucepot \$11.95
2 1/2 qt. Saucepot/Skillet \$11.95
3 1/2 qt. Saucepot/Skillet \$12.95
Caseroilne 2 1/2 qt. \$11.95
8 1/2" Skillet \$10.95
10" Skillet with cover \$13.95
12" Skillet \$16.95
Dutch Oven 8 qt. \$14.95
5 qt. \$19.95

"Country Inn" CANISTER SET



West Bend's new pantryware... all in chic avocado green or new golden Harvest. Trivet symbols identify contents — flour, sugar, coffee, tea. Seamless finish won't chip or fade, wipes clean. **\$9.95**

Double TEFLON Coated! SPECIAL!



15 1/2" by 12" **COOKIE SHEET**
Even-baking aluminum, double coated with Teflon so it never needs scouring! Buy a pair! **\$1.49**
JUMBO 17" by 14" COOKIE SHEET \$3.49

"Country Inn" RANGE SET

\$4.50



• grease canister
• S & P shakers
Makes disposing of used cooking oils easy. Matching shakers each hold 8 ounces. In avocado green or golden Harvest. **S & P SHAKERS ONLY \$2.25**

Gambles
The Friendly Store

Porcelain on aluminum
Colorful 8-cup **AUTOMATIC PERK**
\$12.99

• avocado green or harvest
• brews tasty coffee automatically

West Bend's new percolator in avocado or harvest brews 6 to 8 perfect cups, and keeps it hot automatically. Serve light shows when coffee's ready.



Colorful PARTY SKILLET
with deep cover for roasting
\$24.95

Just set the electric heat control dial for perfect cooking temperatures! Party-styled, with colorful porcelain-on-aluminum exterior in Avocado green or new golden Harvest... leakproof, stain-resistant, dishwasher-safe. Lined with non-stick Teflon — Fired-on Teflon II that's scratch-resistant. Welcomes metal spoons and spatulas! ***DuPont TM**

Color Country Kettle



Fired-on TEFLON II
5 qt. automatic **"COUNTRY KETTLE"**
colorful Avocado or golden Harvest exterior
• porcelain-on-aluminum
• scratch-resistant Teflon
• automatic heat control
\$24.95

Discover the fun of "dial-a-meal" cooking! West Bend's Country Kettle has automatic temperature settings from "warm" and "simmer" to "425°" for use as a roaster, oven, chafing dish and deep fat fryer. Porcelain exterior in Avocado green or golden Harvest... stain-resistant, dishwasher-safe!



TEFLON-coated 12 cup MUFFIN PAN
\$2.59
Buns, biscuits, muffins pop out easily — no need for liners.
8 CUP SIZE **\$1.49**



2-qt. BEAN POT
\$5.99
Ceramic 2 qt. pot with chrome plated heating unit. Boils more beans, casseroles, hot dishes.

Services in Our Churches

ST. PAUL
UNITED CHURCH OF CHRIST
The Rev. Warner Siebert, Pastor.
Thursday, Nov. 21—
10:00 p.m.—Helping Hand, Busy
ees, Sugar and Spice, Growing
together meetings.
Friday, Nov. 22—
9:00 a.m.—Confirmation classes
11:30 a.m.—Youth choir.
Saturday, Nov. 23—
9:15 a.m.—Church school.
10:30 a.m.—Worship with "thank
giving." Courier articles due.
Sunday, Nov. 24—
7:30 p.m.—Teachers' meeting.
Monday, Nov. 25—
7:30 p.m.—Mailing committee.
Tuesday, Nov. 26—
8:00 p.m.—Community Thanks-
giving service.

ST. MARY'S
CATHOLIC CHURCH
The Rev. Fr. Francis Wahowiak
Thursday, Nov. 21—
7:30 p.m.—Confessions.
8:30-9:30 p.m.—Confessions.
Friday, Nov. 22—
8:00 a.m.—Mass.
Saturday, Nov. 23—
8:00 a.m.—Mass.

ST. BARNABAS
EPISCOPAL CHURCH
20500 Old US-12
The Rev. William D. Ladkau, Vicar
Friday, Nov. 22—
1:00 a.m.—Church service.
1:30 a.m.—Church school. Nur-
tury.
Saturday, Nov. 23—
8:30 a.m.—Holy Communion.

CHURCH OF CHRIST
13661 Old US-12, East
R.D. Parnell, Minister
Friday, Nov. 22—
10:00 a.m.—Church school
11:00 a.m.—Worship service
6:00 p.m.—Worship service.
Saturday, Nov. 23—
7:30 p.m.—Mid-week bible study.

YES
WE ARE MAKING
LONG-TERM FARM
REAL ESTATE
LOANS

SEE US.

Federal
LAND BANK
Association

665-6139 2221 Jackson Ave.
Ann Arbor, Mich. 48106
P.O. Box 1006

FIRST UNITED
METHODIST CHURCH
The Rev. Robert Worgess, Pastor
Thursday, Nov. 21—
8:00 p.m.—Commission of Social
Concerns.
Sunday, Nov. 24—
9:00 a.m.—Church School (third
through senior high).
10:00 a.m.—Church school (nur-
sery through fifth).
10:00 a.m.—Worship service.
11:05 a.m.—Adult class.
7-8:30 p.m.—Senior MYF.
Monday, Nov. 25—
8:00 p.m.—Commission on Mis-
sions.
Tuesday, Nov. 26—
9-10:30 a.m.—WSSS Study class
at home of the Rev. John Fall.
Wednesday, Nov. 27—
1:00 p.m.—WSSS Executive
meeting-at home of June Warren.
4-4:45 p.m.—Primary choir.
5-5:45 p.m.—Junior choir.
7:00 p.m.—Youth choir.
8:00 p.m.—Thanksgiving service
at Congregational Church. Senior
choir will sing at the service, re-
hearsal following.

METHODIST HOME CHAPEL
The Rev. John Fall Administrator
The Rev. Wm. Johnson, Chaplain
Sunday, Nov. 24—
8:45 a.m.—Worship service.

IMMANUEL BIBLE CHURCH
The Rev. Frank C. Frinkle, Pastor
145 E. Summit St.
Sunday, Nov. 24—
9:45 a.m.—Sunday school, nur-
sery provided.
11:00 a.m.—Morning worship,
nursery provided.
7:00 p.m.—Evening service.
Every Wednesday—
7:30 p.m.—Family Hour and
Junior choir.

ZION LUTHERAN CHURCH
Corner of Fletcher, Waters Rds.
(Rogers Corners)
The Rev. John R. Morris, Pastor
Thursday, Nov. 21—
Choir Night
7:15 p.m.—Junior choir.
8:00 p.m.—Senior choir.
Saturday, Nov. 23—
9-11:30 a.m.—Seventh grade
youth instruction class.
Sunday, Nov. 24—
9:00 a.m.—Sunday school.
10:15 a.m.—Worship.
6:30 p.m.—Adult Inquirers.
7:30 p.m.—Luther League.
Tuesday, Nov. 26—
9:00 a.m.—Monroe Conference
pastors meet here.
7:30 p.m.—Women's shuffleboard.
Wednesday, Nov. 27—
8:00 p.m.—Thanksgiving Eve
service.

ST. JOHN'S EVANGELICAL
AND REFORMED CHURCH
(United Church of Christ)
Francisco
The Rev. Robert Townley
Sunday, Nov. 24—
9:45 a.m.—Sunday school.
11:00 a.m.—Church services.

SALEM GROVE
METHODIST CHURCH
The Rev. George Nevin, Pastor
Sunday, Nov. 24—
10:00 a.m.—Sunday school.
11:15 a.m.—Church service.

CONGREGATIONAL CHURCH
(United Church of Christ)
The Rev. Daniel Kalin, Pastor
Thursday, Nov. 21—
8:00 p.m.—Esther Chapter at
parsonage.
Sunday, Nov. 24—
10:00 a.m.—Church and Sunday
school.
Tuesday, Nov. 26—
7:00 p.m.—Nominating commit-
tee.
Wednesday, Nov. 27—
6:30 a.m.—Men's breakfast.
8:00 p.m.—Community Thanks-
giving service.

GREGORY BAPTIST CHURCH
The Rev. Grant Lapham, Pastor
Sunday, Nov. 24—
10:00 a.m.—Worship service.
11:15 a.m.—Church school.
6:30 p.m.—Baptist Youth Fel-
lowship.
7:30 p.m.—Evening worship ser-
vice.

ST. THOMAS
EVANGELICAL LUTHERAN
Cor. Ellisworth and Haab Rds.
Freedom Township
The Rev. Daniel L. Mattson, Pastor
Saturday, Nov. 23—
9:00 a.m.—Confirmation class
for 6th and 7th graders.
Sunday, Nov. 24—
10:00 a.m.—Church service.
11:00 a.m.—Sunday school.

ST. JACOB EVANGELICAL
LUTHERAN CHURCH
12501 Rethmiller Rd., Grass Lake
The Rev. Andrew Bloom, Pastor
Sunday, Nov. 24—
9:45 a.m.—Worship service.
9:45 a.m.—Sunday school.
10:45 a.m.—Worship service.

BETHEL EVANGELICAL AND
REFORMED CHURCH
(United Church of Christ)
Freedom Township
The Rev. T. W. Menzel, Pastor
Sunday, Nov. 24—
10:00 a.m.—Worship.
11:00 a.m.—Sunday school.

CHELSEA BAPTIST CHURCH
The Rev. Elmer S. Steenson, Pastor
Sunday, Nov. 24—
10:00 a.m.—Sunday school.
11:00 a.m.—Worship service.
Nursery care available during Sun-
day school and worship service.
6:00 p.m.—Junior and Senior
Baptist Youth Fellowship.
7:00 p.m.—Evening worship.
Wednesday, Nov. 27—
7:30 p.m.—Bible study and
prayer meeting.

FIRST CHURCH OF CHRIST,
SCIENTIST
1883 Washtenaw Ave., Ann Arbor
Sunday, Nov. 24—
10:30 a.m.—Morning service.
Lesson-Sermon entitled "Soul
and Body."

NORTH SHARON
COMMUNITY BIBLE CHURCH
Sylvan and Washburn Rds.
The Rev. Paul Collins
Sunday, Nov. 24—
10:00 a.m.—Sunday school.
11:00 a.m.—Worship service.
6:30 p.m.—Young People's
service.
7:00 p.m.—Evening service.
Every Wednesday—
7:30 p.m.—Prayer meeting.

FIRST ASSEMBLY OF GOD
CHURCH
14000 Old US-12
The Rev. Stephen J. Vaudrey,
Pastor
Sunday, Nov. 24—
10:00 a.m.—Sunday school.
11:00 a.m.—Worship service.
7:00 p.m.—Evangelistic service.

NORTH LAKE
METHODIST CHURCH
The Rev. George Nevin, Pastor
Sunday, Nov. 24—
9:30 a.m.—Worship service.
10:30 a.m.—Sunday school.

FIRST UNITED
PRESBYTERIAN CHURCH
Unadilla
The Rev. T. H. Liang
Sunday, Nov. 24—
9:45 a.m.—Sunday school.
11:00 a.m.—Worship service.
Every Tuesday—
8:00 p.m.—Choir practice.

342 MEN'S
SPORT
COATS
1/2 Price
\$25 Sport Coats Now \$12.50
\$40 Sport Coats Now \$20

BEAUTIFUL NEW
Fall & Winter
Coats
SAVE 1/2
Dick Butler
O.P.S. Grand Lodge
Opposite
Police Station in Grand Lodge
Mich. Open Friday nights 7-9.
All other nights 7-9. Open
Sundays 12 to 5.

SUNDAY'S SERMON

A Better Life

It would be wonderful if we lived in a world that knew no evil. But such is not the way of life upon earth. There is no exception to the fact that we are all subject to some encounter with disaster and with unhappiness. How gratifying it would be to live in a world that was free from sin. Yet it shall never be. Evil persists, even as life does. You cannot buy a life as perfect as a rose. You cannot expect to abolish oppression, to eliminate want, to wipe out all sickness and disease.

But, you can try. You can develop personal character. You can devote time and energy to the cause of all that is good and worthwhile. You can meet responsibility with a will, adversity with determination, failure with renewed effort.

You can work at it. You may accomplish no more than a trifle, but it will help. And if your efforts are multiplied by the efforts of others you have influenced in some way, then you make an even greater contribution to a better life upon earth.

BIBLE VERSE TO STUDY

"Thou shalt not take the name of the Lord thy God in vain; for the Lord will not hold him guiltless that taketh his name in vain."

1. Of what well known document is this statement a part?
2. By whom was it given?
3. To whom was it given?
4. Where may it be found?
(Answers elsewhere on this page)

Carelessness is responsible for many accidents but you can't make the careless people believe it.

ST. JOHN'S EVANGELICAL
AND REFORMED CHURCH
(United Church of Christ)
Rogers Corners
The Rev. Robert Townley
Sunday, Nov. 24—
9:30 a.m.—Church service.
10:30 a.m.—Sunday school.

WATERLOO VILLAGE CHURCH
(Evangelical United Brethren)
The Rev. Wilbur Silvernail, Pastor
Sunday, Nov. 24—
10:00 a.m.—Sunday school.
11:15 a.m.—Worship service.



POWER POOL CONTROL CENTER: The future home of the new Michigan Power Pool control center, still under construction, is at the corner of Wagner and Selo Church Rds., at the southwest corner of Ann Arbor. When completed the \$3,500,000 facility will be jointly staffed by employees of the principal pool partners, Consumers Power Co. and the Detroit Edison Co.

Interconnected Power Pool Links Four-State Area

Soon the chance of an annoying and inconvenient power failure that plagues every system from time to time will be reduced through the completion of, interconnecting extra-high-voltage transmission lines.

The connection will be for the purpose of electrical exchange with power systems in Michigan, Indiana, Ohio and Illinois and is scheduled for completion by July 1969.

According to Consumers Power Co. the 220 miles of 345,000-volt transmission line will be built across the southern half of the lower peninsula and south to points near Toledo and the Indiana state line.

Participants in the Michigan work, Consumers Power and Detroit Edison Co., feel the interconnections will strengthen the systems of all participating companies. James H. Campbell, Consumers Power president, said the result will be greater reliability and efficiency.

For example Michigan will be able to exchange power on a seasonal basis with Chicago, with consequent economies to both. In times of emergency each utility is pledged to lend assistance to other members.

Other members of the project are the Toledo Edison Co., the Ohio Power Co. in Canton, the Indiana & Michigan Electric Co. in Ft. Wayne, the Northern Indiana Public Service Co. in Ham-

mond and the Commonwealth Edison Co. in Chicago.

One of the new lines extends from Lima, O., to Detroit via Toledo, tying together the systems of Ohio Power, Toledo Edison and the Detroit Edison-Consumers Power systems. The other line runs from a point near South Bend, Ind. to near Kalamazoo and connects the Indiana and Michigan Electric and the Consumers Power-Detroit Edison systems.

These two new lines, with the 345,000-volt line across lower Michigan and the existing 345,000-volt network of the American Electric Power systems, will create a high-capacity transmission loop within Indiana, Michigan and Ohio. The five companies involved in this primary exchange serve more than 35 million customers and have a combined total generating capacity of more than 13 million kilowatts.

An additional 8.2 million kilowatts and 2.5 million customers will be added by the linkage of Commonwealth Edison and NIPSCO through their interconnections with the Indiana & Michigan Electric Co.

Detroit Edison and Consumers Power have been interconnected since 1928 and have operated as an integrated power pool since 1962.

The Michigan Power Pool is interconnected also with Hydroelectric Power Commission of Ontario,

through Detroit Edison. There are now three interconnections with Canada near Windsor, Sarnia, Ontario, and Detroit.

Bible Verse Answers . . .

1. The Ten Commandments.
2. By God.
3. Through Moses to the children of Israel and succeeding generations.
4. Exodus 20:7.

The only way to get anything done is to start doing it.

Fall Hair-Do

Our operators are trained and experienced with up-to-date hair styles. We also offer service to wigs and wiglets.

Open Monday thru Saturday and Mon., Wed. and Thurs. evenings.

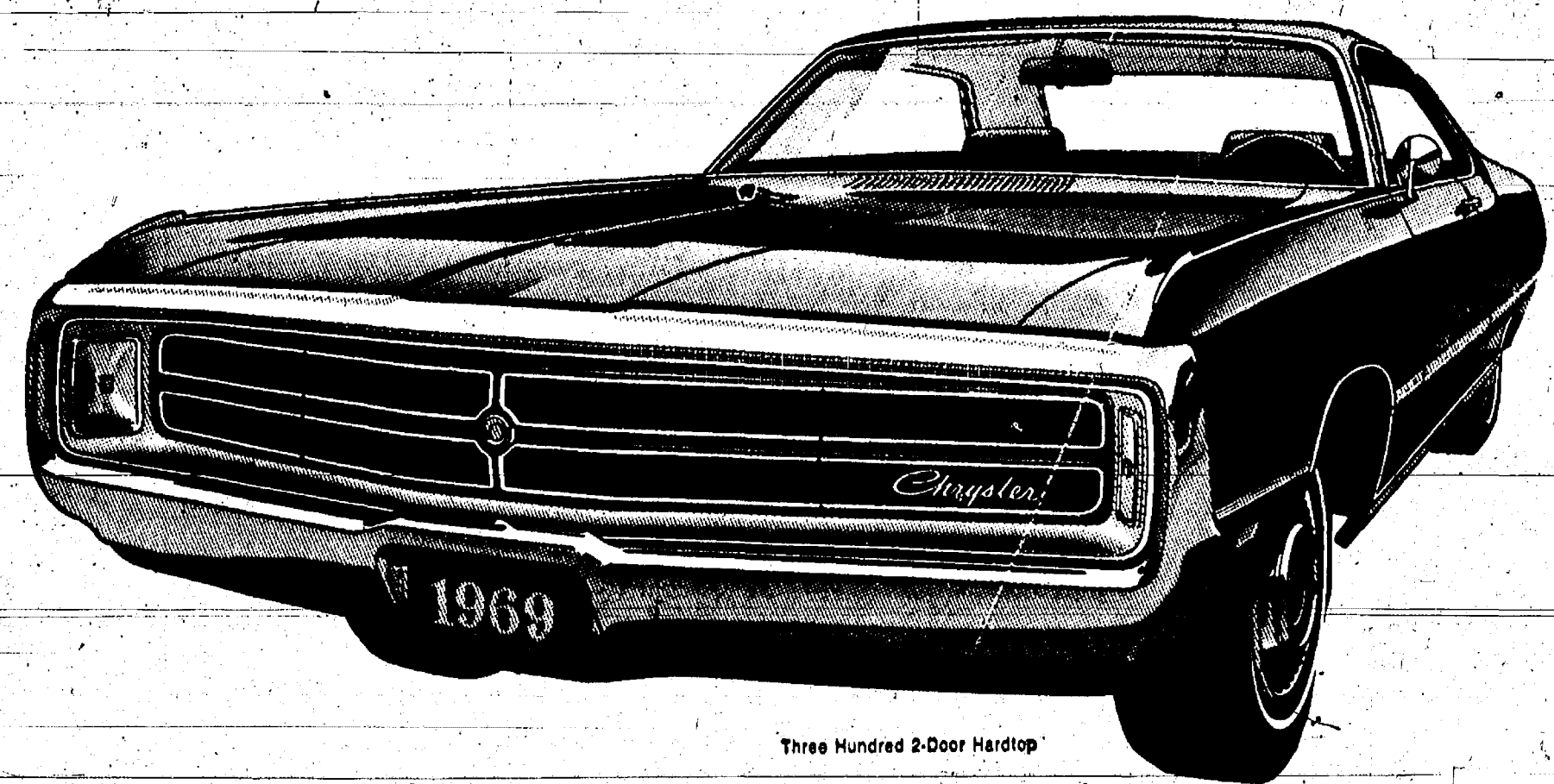
Call 475-5421 for appointments.

VILLAGE BEAUTY SALON

JEAN SWEET, Owner
Operators: Judy, Pansy, Angie, Sandy and Mary.



Your next car is here.



Three Hundred 2-Door Hardtop

The great new Chryslers for 1969. 15 full-sized models. With the kind of performance, ride, and luxury that could only come from Chrysler.

Call it up.

G. A. SALES & SERVICE • 1185 Manchester Road

AUTHORIZED DEALERS **CHRYSLER** MOTORS CORPORATION

The All-New Chrysler

REPORT OF CONDITION OF Chelsea State Bank

Chelsea, Michigan, at the close of business October 30, 1968, a state banking institution organized and operating under the banking laws of the State and a member of the Federal Reserve System. Published in accordance with a call made by the State Banking Authorities and by Federal Reserve Bank of this District.

ASSETS

	Dollars Cts.
Cash, balances with other banks, and cash items in process of collection	\$ 1,108,181.94
United States Government obligations	4,134,722.75
Debt securities of States and political subdivisions	2,072,387.12
Debt securities of Federal agencies and corporations	100,000.00
Debt securities (including \$24,000.00 corporate stocks)	84,350.00
Loans and discounts	8,241,427.66
Real estate, furniture and fixtures, and other assets representing bank premises	377,784.73
TOTAL ASSETS	\$16,118,854.20

LIABILITIES

	Dollars Cts.
Deposits of individuals, partnerships, and corporations	3,499,068.57
Time and savings deposits of individuals, partnerships, and corporations	9,778,515.63
Deposits of United States Government	173,230.21
Deposits of States and political subdivisions	760,874.59
Deposits of officers' checks, etc.	41,200.03
TOTAL DEPOSITS	\$14,252,898.00
(a) Total demand deposits	4,307,873.37
(b) Total time and savings deposits	9,945,015.63
Other liabilities	257,373.63
TOTAL LIABILITIES	\$14,510,264.43

CAPITAL ACCOUNTS

	Dollars Cts.
Common stock—total par value	\$ 400,000.00
No. shares authorized	8,000
No. shares outstanding	8,000
Surplus	400,000.00
Undivided profits	708,591.57
Reserves for contingencies and other capital reserves	100,000.00
TOTAL CAPITAL ACCOUNTS	\$ 1,608,591.57
TOTAL LIABILITIES AND CAPITAL ACCOUNTS	\$16,118,854.20

MEMORANDA

Page of total deposits for the 15 calendar days ending with call date \$14,462,075.15

Page of total loans for the 15 calendar days ending with call date \$8,251,250.71

As shown in "Assets" are after deduction of valuation reserves of 122,514.37

Assets of State of Michigan 11,460.00

Paul G. Schaible, Jr., Vice President and Cashier, of the above bank do hereby declare that this report of condition is true to the best of my knowledge and belief.

PAUL G. SCHAIBLE, JR.
We, the undersigned directors, attest the correctness of this report of condition and declare that it has been examined by us and to the best of our knowledge and belief is true and correct.

P. G. SCHAIBLE
F. W. MERKEL
DUDLEY K. HOLMES
Directors.

Notary Public
Sworn to and subscribed before me this 13th day of November, 1968.
Wallace Wood,
Notary Public.
Commission expires December 10, 1971.

CROSSWORD PUZZLE

1. Mountain
defile
2. Above
3. South
4. American
country
5. Castle or
bishop
6. Not at
home
7. Vegetable
8. Twin of
Follux
9. Correct
10. Heavenly
body
11. Rabbit
12. Note in
scale
13. Conjunction
14. Household
need
15. Rubber tree
16. One of an
audience
18. Still
19. A baby
bird
30. Relative
31. Being
36. Trees
37. Fuss
38. Uterate
41. Pronoun
42. Coagulate
43. Incarnation
of Vishnu
44. Any
45. Wading
bird
47. Snail
48. Olfactory
organ
51. Plead

's Answer

L	A	M	O	S							
D	E	P	O	G	E						
N	R	I	C	H	E						
T	O	R	O	L	E						
F	O	W	E	R	E						
R	A	N									
R	G	A	T	E	S						
U	P	L	O	V	E						
E	L	I	C	N	E	T					
P	O	S	E	R	S						
R	L	A	D								
C	O	L	E	N	T						
O	N	A	R	E							
E	E	S	F	A	N						

7	8	9	10	11
/	14.			
/	17			
20	21			
/	23			/
29			30	31
		34		
	38			
40	41		/	/
45		46	47	48
/				
	52			
	55			

A MOTHER ON DRAFT
 San Jose, Calif.—Erik Whitehorn, 18, refused to sign for the draft because he didn't have his mother's permission. The mother said the law would not let her son own property as a minor, couldn't vote, and couldn't get married without her permission. She claimed anyone "unable to do these things was not capable of signing a draft contract."



DR. GEORGE N. KOFFEMAN

the natural way to health

N. Koffeman

IC PHYSICIAN

Tues., Thurs.
2 p.m. to 7 p.m.
Sat.: 2 p.m. to 4:30 p.m.

Mon., Wed., Fri.
10 a.m. to Noon, 2 to 8 p.m.
Tues., Sat.: 10 a.m. to Noon

MANIPULATION

SPECIFIC ADJUSTING

without charge on low-back
sinus trouble, accidents
heart, stomach, liver, gall
bladder, etc.

person. No obligation.

11

LET'S LOOK AT THE RECORDS BY LINDA NORRIS

Fifty three and a half minutes of the fabulous Ella Fitzgerald contained in her new album, 80 by Ella... Thirty-six songs on one album, featuring a medley of 30 songs, you put 30 songs on one album? This was the question asked by Ella... It was hard to answer—equally hard to accomplish, according to Capitol execs... first things went slowly, while everyone, Ella, musicians, conductor, engineer and producer tried to interpret music, lyrics and become comfortable with the idea... gradually all began to get used to the results, and according to Ella, the finest album I have ever recorded... included... are, in my opinion, some of the greatest standards ever written... It is impossible to individually describe each cut or even presume to suggest which should be given special attention... The album, like the music, can only be described in the brief word—Ella.

Stan Kenton's Finian's Rainbow combines the extraordinary talents of a music legend with songs and music from some of the all-time great movies... Whatever can be said about Kenton the man, he always be listened to in the heart of his music... This particular album is no exception to that Kenton formula... Included in this album is The Odd Couple, The Rat Patrol, Rosemary's Baby, Pease and a collection from the forthcoming motion picture release featuring Fred Astaire—Finian's Rainbow... The title song, Old Maid Moon, The Great Come and Get It Day, When I'm Not Near the Girl I Love and the song that gives the feeling of the film—Are Things in Gloamora?

New Books at Library

"Texans Ride North" Austin
 "Dr. Lesley's Triumph" Celsthorpe
 "A Penny For The Whishing Well" Maesser
 "The Pink Camelia" Bergstrom
 "To Marry For Love" Miller
 "The Day The World Stopped" Coblenz
 "Rogue's Gallery" Foreman
 "Northwater" Crowe
 "A Haunted Woman" Friedman
 "The Wind Blows Free" Smith
 "The Country of Again" Hubbard
 "The River Devils" Vaughan
 "The Tachi Tree" O'Donnell
 "Everything To Live For" Horgan
 "The Golden Stairs" Leslie
 "The Iron Sanctuary" MacLeod
 "Dance In Distress" Cooper
 "O. Charitable Death" Paves
 "Disturbance on Berry Hill" Fenwick
 "Clash of Distant Thunder" Martin
 "A Taste of Sangeria" Keith
 "Death of a Con Man" Bell
 "Rockets, Missile, and Men in Space" Ley
 "Traditional Music in America" Ford
 "The Money Game" Smith
 "Cape Cod Cookbook" Hunt
 "Your Book of Judo" Ewen
 "The Right People" Birmingham
 "Behind the Lines—Hanoi" Salisbury
 "Myself When Young" Detzer
 "The Violent Friend—Mrs. R. L. S." MacKay
 "They Rode the Shining Hills" Fox
 "The Burning Glass" Behrman
 "Survival of the Fittest" Johnson
 "Humphrey" Griffith
 "The Ewe Lamb" Erskine
 "The End of the Rug" Llewellyn
 "Murderer's Burning" Courtney
 "Sam Houston" Gerson
 "Old Hickory" Gerson
 "A Case of Need" Hudson
 "Art of Paper Maché" Kenny
 "Seat Weaving" Perry
 "Weather Handbook" Conway
 "The Rings of Destiny" Connolly
 "What Modern Hypnotism Can Do For You" Petrie
 "Great Negroes, Past and Present" Adams
 "G. I. Diary" Parks

Present Day Auto License Plates Serve Many Diverse Functions

Lansing—What advertisements Michigan, honors its universities, tells where a motorist is from, causes people to stand in line in some times bitter cold weather, can relieve traffic tension, employs convicts, and is a huge money-maker for the state? Give up?

All these functions are in a couple of six by 12-inch galvanized steel rectangles called license plates.

Primary function of license plates is to register and "brand" every motor vehicle in the state—cars, trucks, trailers, motorcycles, farm vehicles. There has even been a jinxlike or two.

The man in charge of handling this enormous operation—ordering, selling, promoting, operating branch offices, collecting fees—is Secretary of State James M. Hare.

To handle sales in an expeditious manner so that no motorist has to travel too far, some 250 local offices in every county of Michigan sell plates. In addition, there are co-operating Automobile Club of Michigan offices offering plates to club members.

In many smaller communities, Hare's branches move in for periods of time to provide localized community service.

This is the year of the big change in license plate sales.

"And when motorists step up to pay for their plates this year (actually the fee is a weight tax with revenue used for roads), vehicle owners are going to realize that they are paying quite a good deal more," said Secretary of State James M. Hare. "The legislature, as a method of gaining needed additional revenue, raised weight tax effective this year from 35 cents a hundredweight to 55 cents per hundred pounds of the weight of a car."

There is also a new formula of gross vehicle weight for larger commercial vehicles.

"And even the dates are different."

Commercial plates go on sale Oct. 1, 30 days earlier than usual.

"But passenger plates go on sale later," Hare said.

Actually the weight tax change is merely going back to pre-depression days when it was 55 cents a hundredweight. It was rolled back in 1934, when hard times were the order of the day.

The increase in weight tax, according to Hare, will raise revenue from passenger car plates from \$42 million to \$66 million.

Vehicle licensing is not new. Michigan began registering back in 1905 and issued its first official plates in 1910.

New York began auto licensing shortly after the turn of the century. At the time, there were fewer than 20,000 cars in the country. Now at peak traffic periods, it seems that there are that many in the lane ahead of you.

Many motorists play license plate games to relieve the traffic "tension." Some see how many different states they can spot.

One Detroit motorist, tired of steaming in traffic, invented his own "prefix" game. This traffic-trapped driver tried to fit the prefixes of cars near him to his driver—like "BG—Beautiful Girl," or "RC—Rusty Car."

Chances are slim that license plates would be rusty, though. Michigan switched to galvanized steel for 1965 plates to make them more resistant to the state's harsh winters and road salts and chemicals.

Back in 1910 through 1914, porcelain was used over cast iron. Later, cold rolled steel was used. Most states use steel, some with additives. Others have turned to aluminum. Illinois' experiment with a soy bean derivative during World War II didn't work too well. Motorists liked the plates. But so did cows—they ate them.

More than 2,500 tons of 28-gauge galvanized steel coil is used in making Michigan's PLATES. Some 180 inmates at Southern Michigan Prison near Jackson make them. Plates, made at the prison since 1918, constitute one of the largest industries there.

Plate-making is a nine-month operation. To relieve the monotony, inmates occasionally interject a little humor with the plates.

CHELSEA VILLAGE COUNCIL PROCEEDINGS

November 5, 1968
 Council Room

Regular Session

This meeting was called to order by Pres. Baldwin at 8:00 p.m. Trustees present: Fulks, Gorton, Heydlauff, Miller, Pennington and Weber. The Minutes of the Regular Session of October 15, 1968 were read and approved.

Trustee Heydlauff gave a summary of the work activity of the Police Dept. for the month of October, 1968.

Trustee Pennington advised the council that it will take 18 lights to service Mayor Drive at a cost of approximately \$3,500.00. Approval for the construction was authorized.

A discussion was held with Mr. Dick Ahern, Mr. Bob Randall and Dr. James Shadon regarding the possibility of a Modular type home construction, to be located in the Flanders Street area. Pres. Baldwin advised the group that the Village Planning Commission and the engineers, Finkbeiner, Pettis and Strout, would be consulted.

A discussion was held regarding the old Chelsea Junior High School area. Possible uses for the area were discussed.

Motion by Weber, supported by Fulks, that the village request the Chelsea School Board to release the bid of \$15,000.00 submitted by the Village for the old Junior High School property. Roll call: Yeas—Weber, Pennington and Fulks. Nays—Miller, Gorton, Heydlauff and Baldwin. Motion not carried.

A discussion was held regarding the Village landfill with no official action taken at this time.

Motion by Weber, supported by Pennington, to advertise for bids for a cab and chassis and dump body for use by the Chelsea Public Works Dept. Bids to be accepted until 12:00 noon on Tuesday, November 19, 1968. Roll call: Yeas all. Motion carried.

Trustee Pennington advised the Council that the relocation of the water main at the water tower area has been completed.

A discussion was held regarding the civil action being taken against the Village of Chelsea and Village Officers by Dr. Papo, Dr. Stubbs and Dr. Botsford in a circuit court action taken in the Washtenaw County Court relating to the drainage of storm water into the peat marsh area. The suit asks for discontinuance of the practice and damages of \$750,000.00.

Motion by Weber, supported by Pennington, to authorize payment of \$23,595.30 to Ann Arbor Construction Company for the 1968 street and parking lot construction program—\$20,304.70 from the General Fund and \$3,290.60 from the Parking Meter Fund. Roll call: Yeas all. Motion carried.

Motion by Weber, supported by Heydlauff, to authorize payment to Peter Kurzy in the amount of \$1,483.01, \$1,374.70 from the General Fund and \$102.12 from the Parking Meter Fund. Roll call: Yeas all. Motion carried.

Motion by Heydlauff, supported by Gorton, to enter into a contract with Finkbeiner, Pettis and Strout for the preparation of a master sewer plan for the Village of Chelsea. Total contract price of \$3,000.00. Roll call: Yeas all. Motion carried.

Motion by Fulks, supported by Heydlauff, to authorize a salary of \$4,000.00 per year for the position of telephone operator and dispatcher. Roll call: Yeas all. Motion carried.

Motion by Fulks, supported by Gorton, to authorize and direct the clerk to issue checks in payment of bills as presented. Roll call: Yeas all. Motion carried.

Motion by Pennington, supported by Weber, to adjourn the meeting. Roll call: Yeas all. Motion carried.

Meeting adjourned.

Approved: Nov. 19, 1968.
 Donald E. Baldwin, President.
 George Whims, Clerk.

JACKPOT
 The Tigers won the American League pennant for the eighth time in 1963. They have won the World Series three times—defeating the Cubs in 1935 and 1945 and the Cardinals in 1968.

Special Telephone Number Available For Ski Data

Southeast Michigan skiers don't have to go far from home to enjoy the luxury, sophistication and excellence of skiing they seek.

Six top ski resorts are located in Southeast Michigan, right at the skiers' back door.

What's more, by calling a special ski weather, road and snow conditions number, 991-6720, skiers may find out what snow conditions prevail on the slopes. The special, recorded report is changed daily, seven days a week. It is a service of the Southeast Michigan Tourist Association and the sorts of Alpine Valley, Mt. Brighton, Mt. Granplan, Mt. Holly, Irish Hills Sports Park and Pine Knob.

The number may be dialed anytime, day or night.

Alert Driver License Examiner Spots Man Wanted By Police

Detroit—Surveillance by a Detroit driver license examiner paid off recently with the apprehension of a person wanted by the police.

Ahmed Mozhah, license examiner at the Department of State's Driver License Bureau No. 4, 5731 Michigan Ave., interviewed the prospective driver who said he wanted to take a written test for a driver license.

The subject produced a badly smeared and mutilated birth certificate. Alertly, examiner Mozhah checked the list of lost or stolen birth registration cards supplied by the Detroit Department of Health. It was on the list.

Detroit police were called and the subject was taken into custody. He was wanted for armed robbery and probation violation.

ON DISCARDED NEEDLES

Oyster Bay, N.Y.—The Town Board has approved a law that would make doctors subject to fines or imprisonment for failing to destroy discarded hypodermic needles. The sanitation department found more than 500 discarded needles in trash cans in a two-day period. The needles can be reused by narcotic addicts.

Farm Bureau's FARMOWNERS Policy...

4 Coverages in 1 policy!

- Home and Contents
- Farm Liability
- Farm Personal Property
- Barns & Outbuildings

Contact me today!

DAVID D. ROWE
 37 E. Summit St., Chelsea
 PHONE 475-8065
 FARM BUREAU INSURANCE

PRE Christmas SALE

ELECTRIC SHAVERS

NORELCO Triple Header	Our Price \$24 ⁹⁵
NORELCO Speed Shaver, 2 Head	\$15 ⁹⁵
SCHICK 3-Speed Shaver	\$24 ⁹⁵
SCHICK Retractable	\$19 ⁹⁵
SCHICK Cordless, Model 222	\$19 ⁹⁵
SUNBEAM 555 II Shavemaster	\$21 ⁵⁵
SUNBEAM SM7S Shavemaster	\$19 ⁹⁵
REMINGTON 300 Selectro Shaver	\$24 ⁹⁵
LADY RONSON Cordless	\$27 ⁹⁵
RONSON Cordless Shaver	\$24 ⁸⁸

BUDGET-WISE STORE

Chelsea's First Discount Store

116 South Main Street Phone GR 9-1611

Back in 1910 through 1914, porcelain was used over cast iron. Later, cold rolled steel was used. Most states use steel, some with additives. Others have turned to aluminum. Illinois' experiment with a soy bean derivative during World War II didn't work too well. Motorists liked the plates. But so did cows—they ate them.

More than 2,500 tons of 28-gauge galvanized steel coil is used in making Michigan's PLATES. Some 180 inmates at Southern Michigan Prison near Jackson make them. Plates, made at the prison since 1918, constitute one of the largest industries there.

Plate-making is a nine-month operation. To relieve the monotony, inmates occasionally interject a little humor with the plates.

FOR SAFETY'S SAKE

KNOW THE SAFE WAY TO MOVE A PERSON WHO IS IN CONTACT WITH LIVE ELECTRICITY AND CALL YOUR POWER COMPANY.

Rarin' To Go...

Your battery, that is, after our dependable recharging!

We'll put your old battery back into "championship form," ready to give you many months of peppy starts, dependable service.

PURE OIL PRODUCTS

JIM'S PURE SERVICE

Tires — Batteries — Tune-Ups — Brake Service — Wheel Alignment
 PHONE 479-3541 501 SOUTH MAIN

Thank You CHELSEA FIREMEN

In behalf of all of us at Applied Dynamics, I would like to extend our sincere thanks for the tremendous effort put forth by your department in suppressing the fire in our plant.

Because of your quick and effective action, some very important parts of the building were saved. It is reassuring to know that we have such able men to rely upon for fire protection. Again, please accept our gratitude.

Sincerely,
 M. E. Bronson
 Vice Pres., Manufacturing
 Applied Dynamics, Inc.

Now Is the Time To Order Your Christmas Cards

Personalized GREETING CARDS

The personal touch means so much more when it comes to Christmas greetings... see our selection.

Send your best wishes the personalized way... order now from our wide selection of humorous, topical, religious, sentimental cards, imprinted with your own name!

The Chelsea Standard

AGRICULTURE in ACTION

by M. L. Wood
NORMAN TAYLOR

★ Curious Side Effects

The serious Japanese Beetle outbreak in Michigan and the failure to immediately halt or contain it, has caused some curious side-effects.

One reaction on the part of farmers has been to post an unusual number of "No Hunting" signs. The other involves the future of our Coho salmon and similar programs which have been made possible through a tremendous amount of pesticide research and by the direct application of a "lanthretyl" chemical to our streams.

Signs proclaiming "No Hunting or Trespassing to Prevent the Spread of Japanese Beetle" are beginning to appear along roads and trails leading to some of Michigan's prime hunting land, as fearful farmers take a logical step to protect their acres from further spread of the voracious pest.

Ironically, this closing of nature's trailways to the public has been caused by self-styled nature-lovers who opposed the treatment of the beetle outbreak when newly discovered, and at a time when treatment would have been most effectively done. Leading the anti-pesticide crusade has been the "Environmental Defense Fund"—a coalition of organic gardeners, bird watchers and back-to-nature enthusiasts who have on several occasions filed injunctions to prevent the use of hard pesticides by the Michigan Department of Agriculture in controlling and eradicating the beetle.

Meanwhile, the destructive pests (it enjoys munching on more than 200 crops, lives both above and below ground during various life-cycles, and can turn a bumper crop of fruit or grain into a putrid mass)—spread unchecked during the battle of words.

The beetle hitch-hikes on shrubbery, in hiker's clothing, or a spadeful of dirt. Much of this spread can be prevented by farmers closing their land to hikers and hunters.

Meanwhile, conservationists now fear that the anti-pesticide hue and cry may cause a general slackening of research and control aimed at such pests as the sea lamprey, which until an effective pesticide was found and introduced into our streams, virtually destroyed fishing in our Great Lakes. It is said that more than 60 pesticides were used in successfully launching the Coho salmon program.

BRIGHT CLOSET

Perk up the interior of your wardrobe closet with a bright coat of paint. The bright color will lighten the interior, making it easier to keep things in order. In addition to providing an extra splash of color.

RUSSIA'S SEVENTH HEAVEN

Moscow Russia has opened a new rotating restaurant called Seventh Heaven. It is one of the world's highest restaurants and patrons say the prices match the height of the building. The better restaurants are: good service, foreign cuisine and foreign music.

**YOU CAN GET
YOUR BEST BUY
IN CENTRAL
AIR CONDITIONING
RIGHT
NOW!**



If you've been planning to air condition your home, you couldn't pick a better time than right now. Don't postpone action until a hot, humid, summer day when the mood strikes you—and every-body else.

If you already have a good warm air furnace, adequate duct work and proper house wiring, you probably already have half of a year's worth of heating/cooling system.

John W. Steele
Heating and Air Conditioning
13877 Old US-12
PHONE GR 9-4451

THE SUPERMARKET THAT'S JUST A LITTLE BIT BETTER



Prices Effective
Wednesday, November 20 through Tuesday, December 3

OPEN WEDNESDAY UNTIL 9 P.M.
CLOSED THURSDAY, NOVEMBER 28
THANKSGIVING DAY

ORDER YOUR STOP & SHOP
TURKEY TODAY!
Guaranteed to be the star attraction
at your traditional
Thanksgiving Dinner

Chase &
Sanborn

COFFEE

All
Grinds 2-lb.
can

\$1.19

Ocean Spray Whole or Strained

Cranberries

1-Lb.
Can **23¢**

New! Green Giant

Yams

1-Lb.,
7-Oz.
Can **37¢**

8-packs and throwaways

Pepsi-Cola

10-Oz.
Bottles **85¢**

Domino Brown or

10X Sugar

1-Lb.
Box **17¢**

Stokely's

Sliced Carrots

1-Lb.
Can **19¢**

Dole Hawaiian

Pineapple

1-Lb.,
4-Oz.
Cans **\$1.00**

★ Sliced ★ Crushed ★ Chunks

McDONALD'S QUALITY CHEK (4 Delicious Flavors)

ICE MILK

. **3** Half Gallons **\$1.00**

Doumak Miniature

Marshmallows

10.5-Oz.
Pkg. **17¢**

Mrs. Smith Deluxe Frozen

Mince or Pumpkin Pie

2-Lb.,
14-Oz.
Pie **89¢**

Kraft's

Cheese Links

Bacon
Smokey
Nippy
Garlic

3 6-Oz. Links **\$1.00**

Sealtest (10c off pkg.)

Pudding

4 Delicious
Flavors

1-Lb.
Ctn. **39¢**

Stokely's

Pumpkin

1-Lb.,
13-Oz.
Can **25¢**

Oaken Keg

Sweet Pickles

2-Lb.
Jar **49¢**

Planters Salted

Mixed Nuts

13 1/2-Oz.
Can **89¢**

Tast-D-Life

Corn

Whole Kernel
or
Cream Style

1-Lb.
Can **15¢**

Dolson Chocolate

Thin Mints

10-Oz.
Box **39¢**

Fluffo All-Purpose

Shortning

3-Lb.
Can **69¢**



**A Message for
THANKSGIVING**

Thanksgiving is the
Time to Give Thanks.
Let Us Give Thanks
To God, Country, Family
and Good Friends

Blue Ribbon

Margarine

16 1/4-Lb. Prints **16¢/lb.**

From McDonald's

Holiday Cheer

Half
Gallon **49¢**

Pioneer Pure Granulated

Sugar

5-Lb.
Bag **49¢**

Sunshine

Hydrox Cookies

1-Lb.
Cello **47¢**

Shur-Good

Fudge Creme

2-Lb.
Pkg. **59¢**

McDonald's Delicious

Egg Nog

Quart
Carton **59¢**

STOP & SHOP'S ENRICHED SLICED

WHITE BREAD

. **5** 1 1/4-Lb. Loaves **95¢**

Honeysuckle Fresh Frozen

SLICED TURKEY

2-Lb.
Box **\$1.79**

Kraft's Cheese

MIDGET LONGHORN

1-Lb.
Horn **79¢**

Royal (Special Label)

PUDDINGS

5 Delicious
Flavors Box **8¢**

McDonald's

WHIPPING CREAM

Half
Pint **23¢**

Nabisco Stack-Pak

RITZ CRACKERS

12-Oz.
Box **37¢**

Keebler

HONEY GRAHAMS

1-Lb.
Box **29¢**

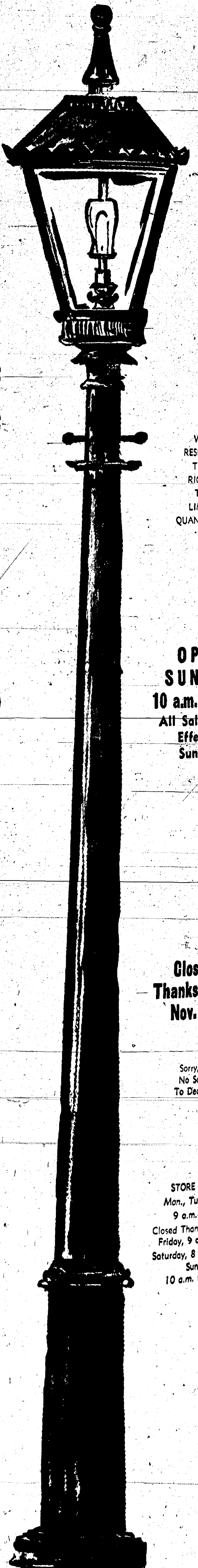
WE
RESERVE
THE
RIGHT
TO
LIMIT
QUANTITIES

OPEN
SUNDAY
10 a.m. - 6 p.m.
All Sale Prices
Effective
Sundays

Closed
Thanksgiving
Nov. 28

Sorry,
No Sales
To Dealers

STORE HOURS:
Mon., Tues., Wed.,
9 a.m.-6 p.m.
Closed Thanksgiving Day
Friday, 9 a.m.-9 p.m.
Saturday, 8 a.m.-9 p.m.
Sunday
10 a.m. to 6 p.m.



THE SUPERMARKET THAT'S JUST A LITTLE BIT BETTER

Stop & Shop

14901 Old U.S.-12
Corner at M-52
Chelsea



Prices Effective Wednesday, November 20
through Tuesday, December 3, 1968

ORDER YOUR STOP & SHOP TURKEY TODAY!

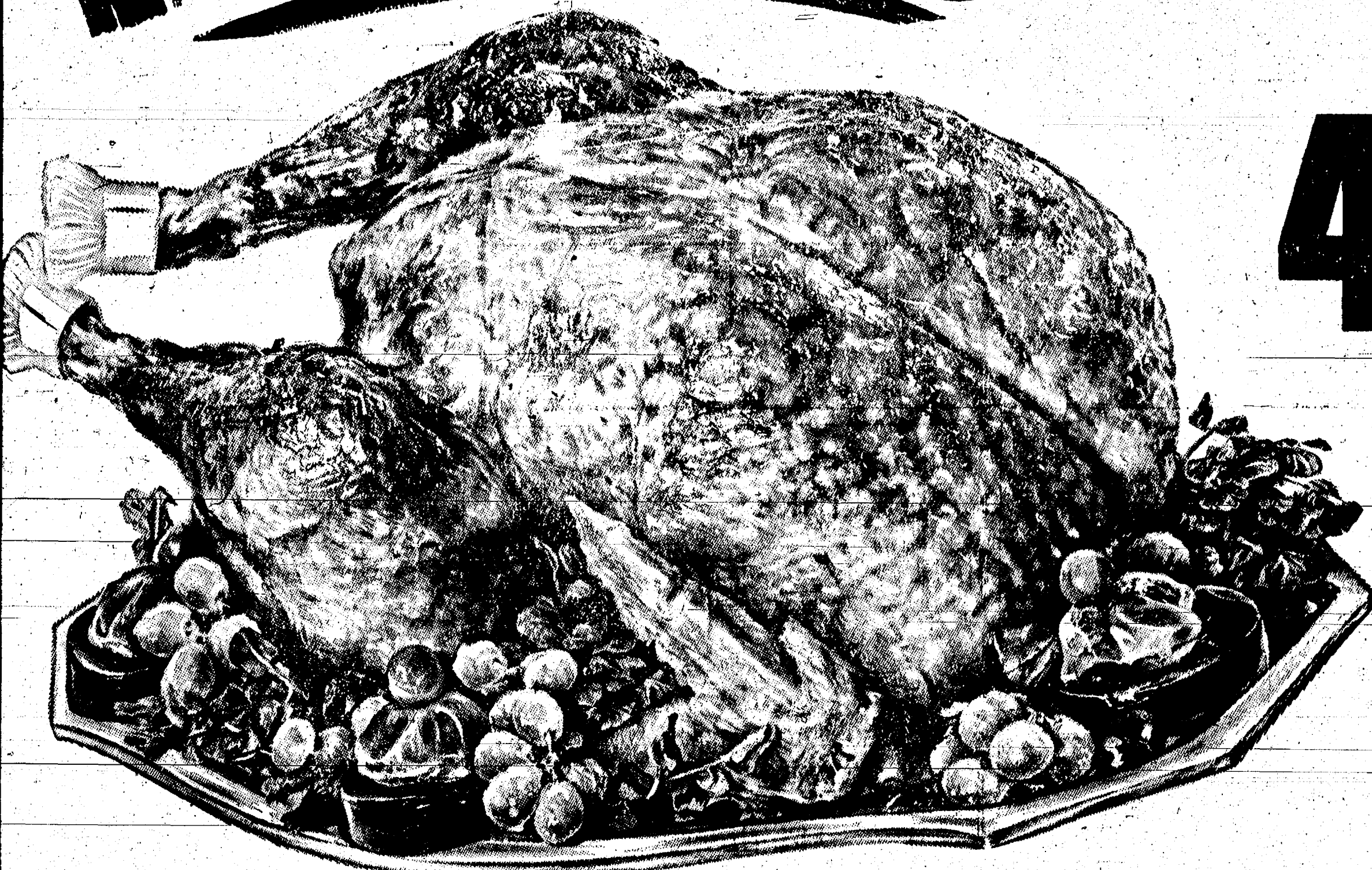
Guaranteed to be the Star Attraction
at your Traditional
THANKSGIVING DINNER

Don't Discount Your Family
Serve The Very Finest!!

TRIPLE R FARMS FRESH DRESSED

- ★ Oven Ready
- ★ Full Breasted
- ★ Plump and Tender
- ★ 18 lbs. and up

TURKEYS



47^c lb.

Honeysuckle Prime

U.S. Gov't Inspected
Fresh Frozen

"Triple R Farms" Fresh Dressed

Swift's Butterball

HEN

YOUNG

ROASTING

STUFFED

TURKEYS

TURKEYS

CHICKENS

TURKEYS

49^c lb.

18 Lbs.
and
Up 37^c lb.

3 to 4 Lb.
Average 39^c lb.
5 to 6 Lb.
Average 59^c lb.

6 to 14 Lb.
Average 59^c lb.

PORK
STEAKS

59^c lb.

SLICED
BACON

1-Lb.
Vacuum
Pack

69^c

PORK
SAUSAGE

2-Lb.
Roll

\$1.49

POLISH
SAUSAGE

59^c lb.

PORK
CUTLETS

79^c lb.

PORK
SAUSAGE

75^c lb.

PORK
LOAST

49^c lb.

SKINLESS
WIENERS

49^c lb.

BONELESS
HAMS

Whole
or Half

\$1.39 lb.

ALL AMERICAN BEEF
HAMBURGER

59^c lb.

FARM FRESH PRODUCE

Southern Grown

Yams . . . 2 lb. 25^c

Fresh, Crisp

Pascal Celery Large Stalk 29^c

Ocean Spray Fresh

Cranberries . . 29^c lb.

New Gun Law Registration Deadline Dec. 1

Detroit—Detailed procedures for registering machine guns, sawed-off shotguns, sawed-off rifles, silencers, deactivated war trophies and other destructive devices were announced today by A. M. Stoeppler, District Director of Internal Revenue for Michigan.

The Gun Control Act of 1968 requires that weapons and devices of this type must be registered with the Internal Revenue Service by Dec. 1.

Stoeppler said that copies of Registration Form 4467 are available at Alcohol & Tobacco Tax and other IRS offices.

The forms are prepared in three copies, two of which should be mailed to the Director, Alcohol and Tobacco Tax Division, Internal Revenue Service, Washington, D.C. 20024. The third copy may be kept by the owner of the firearm or destructive device.

Firearms or destructive devices should not be brought to an IRS office to be registered, Stoeppler said.

Under the new law all firearms and destructive devices requiring registration must be identified by a serial number. If a firearm or device does not have a serial number, the owner should phone, visit, or write the nearest IRS Alcohol and Tobacco Tax office and a number will be assigned.

After obtaining the number, the owner is responsible for affixing it to the firearm or device before completing the registration form. Additional information may be obtained by contacting the nearest Alcohol and Tobacco Tax or other IRS office.

Turkeys Plentiful For Thanksgiving

Imagine a flock of more than one million turkeys, plump and ready for plucking. The Pilgrims never had it so good. Their first Thanksgiving bird likely was a lean, scrawny one with a wild gamey flavor.

Again this year Michigan families can celebrate the Thanksgiving holiday with turkey for the traditional meal at which gratitude is offered for an abundant harvest.

That abundance includes 1,109,000 Michigan-grown turkeys, according to the tally of the Crop Reporting Service, Michigan Department of Agriculture. Less than last year's total, it's still a generous number.

Charles A. Hines, agricultural statistician, reports that heavy breeds account for 1,031,000, and light breeds for 78,000 birds. Total production, down about five percent from 1967, has been declining gradually since 1962. For the United States as a whole, production is down 16 percent below a year ago.

Declining production reflects a similar trend in prices, with the average per-pound price 20.5 cents in 1967, compared to 23 cents per pound the previous year.

Fashion Notes

Shirts with jumpers and with pants vary from the befrilled numbers to the very mannish style shirt. A favorite with the pants and sleeveless bodice is the shirt with high collar and French cuffs. A knotted tie is worn with the buttoned down collar.

The girl who likes a feminine touch with her long pants wears a blouse with ruffles down the front and ruffles around the cuff.

Although the hair stylists approve of curls many youngsters loath to part with their long locks.

Most men are actuated by two motives only: the drive to get money and the fight to keep it.

WEDDING Invitations



ASK FOR

Forever Yours
NATIONAL

- INVITATIONS
- ANNOUNCEMENTS
- ACCESSORIES

You may select your needs with confidence as to quality and correctness of form.

- COMPLETE SELECTION
- PROMPT DELIVERIES

THE
CHELSEA
STANDARD



BOWLING NEWS

Chelsea Women's League

Standings as of Nov. 18

	W	L
Chelsea Cleaners	20	10
Chelsea Lanes	18	12
Wolverine	15	15
Chelsea Milling	12	18
Chelsea Grinding	10	20
Palmer Motor Sales	8	22
Jiffy Mixers	5	25
Dancers	3	27
The Pub	2	28
Schneider's	1	29
Zephyr	0	30

450 series or better: Kay Buss, 161; S. Timmerman, 152-104; R. Johnson, 450; P. Shoemaker, 499; P. Poertner, 483; N. Kern, 483; A. Turner, 397; A. Alexander, 485; D. Alber, 486; D. Johnson, 479; J. Salyer, 400; L. Orlovski, 487.

150 games or better: Kay Buss, 161; S. Timmerman, 152-104; R. Johnson, 450; P. Shoemaker, 499; P. Poertner, 483; N. Kern, 483; A. Turner, 397; A. Alexander, 485; D. Alber, 486; D. Johnson, 479; J. Salyer, 400; L. Orlovski, 487.

Tri-City Mixed League

Standings as of Nov. 16

	W	L
Odd Balls	27	16
Elmstone's	27	17
Wolverine Early Birds	26	18
Sprague Buick & Olds	25	19
Chelsea Cleaners	24	20
Cavanaugh Lake	24	20
3-D	22	22
Clear Lake	21	23
Wolverine No. 1	21	23
Eibler & Frisinger	21	23
Don's Standard	16	27
Four Mobil	8	35

Women's high series: G. Dettling, 473; L. Jarvis, 461; P. Parish, 457.

Women's high games: G. Dettling, 151-108-154; V. Guest, 185; L. Jarvis, 157-109; D. Sannes, 158; M. Ashmore, 150-150; B. Parish, 150-170.

Men's high series: A. Sannes, 508; W. Guest, 548; H. Kunzelman, 546; C. Miller, 537; B. Stone, 520.

Men's high games: A. Sannes, 201-205.

RETIRING

Eddie Mathews, one of the game's greatest sluggers, retired after the 1968 season. He was a major league third baseman for 17 years with the Braves, Astros and Tigers.

MID-STATE FINANCE CORP.
\$25 to \$1,000
For Any
Worthwhile Purpose

See or Call
FRANK HILL
at 475-8631
111 PARK STREET
CHELSEA, MICH.

Rolling Pin League

Standings as of Nov. 19

	W	L
Mogger Uppers	29	15
Key Beaters	28	16
Coffee Cups	27	17
Crackers	25	19
Sassners	24	20
Magers	24	20
Kookie Kutters	23	21
Pots	23	21
Jolly Mops	20	24
Kitchen-Kapers	17	27
Dish Rags	10	28
Brooms	10	34

140 games and over: D. Keezer, 152; H. Ringe, 151; J. Priest, 140; 150-133; W. Meranuck, 149; J. Freeman, 145; J. Lewis, 155; E. Williams, 132-189-170; M. Cook, 148; W. Landwehr, 147; J. Rabbitt, 172-143; E. Harmon, 154-158; J. Edick, 143; Pat. Patterson, 148; M. Coltro, 145; D. Butler, 142; 141; G. Brier, 175-152; E. Reynolds, 168-159; B. Vetter, 141; G. Weiner, 158; E. Miller, 143; P. Borders, 153; S. Parker, 147-156; D. Dirlam, 161; K. Del Prete, 168.

400 series and over: H. Ringe, 417; J. Priest, 442; W. Meranuck, 407; E. Williams, 511; M. Cook, 413; W. Landwehr, 409; J. Rabbitt, 451; E. Harmon, 436; Pat. Patterson, 413; D. Butler, 416; G. Brier, 464; E. Reynolds, 452; G. Weiner, 408; S. Parker, 442; K. Del Prete, 421.

Splits Converted: G. Weiner, 47-55; E. Miller, 5-40; B. McKinley, 2-10; E. Harmon, 6-7; E. Beck, 3-10; M. Cook, 5-10; A. McGinn, 5-6-10; W. Meranuck, 3-10.

Junior House League

Standings as of Nov. 14

	W	L
Wolverine	57	20
3-D Sales & Service	51	26
Pub Bar	46	31
Jiffy Mixers	45	32
Mid-State Finance	44	33
Wonder Bar	42	35
Gambles	41	36
Parish Cleaners	39	38
Boyer Automotive	30	47
Dirty Dozens	28	49
Palmer T-Birds	20	57
No. Am. Rock Corp.	19	58

200 games and over: K. Bidne, 231; R. V. Worden, 226; K. Norris, 224-204; B. Woods, 221; L. Salyer, 220-207; J. Harook, 217-212; G. Weir, 214; A. Hansen, 212; N. Eisenmann, 210; B. Morton, 202; J. Ringe, 200; G. Parker, 200; G. Stephens, 200; R. A. Ringe, 200; L. Schneider, 200.

600 series and over: J. Harook, 628; K. Norris, 620; G. Weir, 600.

500 series and over: L. Salyer, 582; A. Hansen, 568; G. Stephens, 567; N. Eisenmann, 562; R. V. Worden, 555; L. Schneider, 546; K. Bidne, 544; B. Vocum, 540; C. Popovich, 540; S. Hopkins, 538; G. Parker, 538; A. Fletcher, 537; R. A. Ringe, 535; F. Barkley, 527; B. Woods, 520; B. Morton, 520; R. H. Ringe, 517; H. Kunzelman, 511; A. Fleischmann, 510; J. Ringe, 505; B. Fletcher, 504; D. Kyte, 504.

Criticism springs from two sources—intelligent disapproval and emotional reaction.

MIKE'S TV ANTENNA SERVICE

Motorola Automotive Sound Systems

Winegard Home Electronics TV Antenna Systems

Insurance Claims

For Free Estimate, Call
Pinckney 878-3258
or 769-0130

Guys and Gals Mixed League

Standings as of Nov. 11

	W	L
Wonder Bar	30	14
Chelsea Lanes	26	18
2 & 2	25	19
Strikers	25	19
Pub. No. 1	23	21
Pleasant Lake Resort	23	21
Kent's Standard Service	22	21
Team No. 9	21	23
Challengers	21	23
Murphy's Barber Shop	16	28
Recreation Tavern	14	26
Pub No. 2	12	27

Team-high series: Ken's Standard Service, 1985.

Women's high game: B. Fritz, 192.

Women's high series: B. Fritz, 506.

Women's 150 or over games: R. Buss, 153; P. Pardon, 175; N. Collins, 150-162-153; P. Elliott, 171; B. Fritz, 192-173; P. Huston, 177; E. Myles, 167-151; J. Baku, 166; C. Kiewasser, 151; C. Timmerman, 163; D. Sannes, 157; J. Hoag, 162; E. Koenigster, 151.

Women's 425 or over series: J. Baku, 434; E. Fritz, 506; P. Huston, 458; E. Myles, 440; P. Pardon, 460; N. Collins, 465; P. Elliott, 444.

Men's high game: R. Kiewasser, 229.

Men's high series: A. Sannes, 606.

Men's 175 or over series: K. Pardon, 190-188; J. Elliott, 215

187; D. Fritz, 199; D. Baku, 170; E. Baku, 186-201; R. Kiewasser, 229; J. Hank, 178-183; A. Sannes, 192-201-213; A. Rosenreiter, 180; J. Toon, 188-181.

Men's 500 or over series: J. Toon, 518; A. Sannes, 608; E. Baku, 561; R. Kiewasser, 532; J. Hank, 514; K. Pardon, 549; J. Elliott, 570.

Senior House League

Standings as of Nov. 18

	W	L
Parish Cleaners	30	14
Seitz's Tavern	28	15
Chelsea Grinding	28	16
G. E. Boys	24	19
Wolverine Tavern	24	20
Spaulding Chevrolet	22	17
Dana No. 2	22	22
Schneider's Market	20	24
Sylvan Center	19	25
Murphy's Barber Shop	16	24
Dana No. 1	13	30
Wonder Bar	12	32

200 games and over: G. Padham, 233-200-215; R. Eder, 208; C. White, 200; M. Poertner, 240; J. Harook, 221-215; G. Knickerbocker, 232; R. Maurer, 202; G. Burnett, 216; A. Clemes, 201; L. Keizer, 204; E. Dennis, 211; S. Hopkins, 212-212.

600 series and over: G. Padham, 648; M. Poertner, 601; J. Harook, 617; G. Knickerbocker, 601; S. Hopkins, 608.

500 series and over: R. Eder, 544; G. Miller, 508; C. White, 552; A. Sannes, 520; J. Goltz, 538; O. Johnson, 538; H. Pennington, 534; R. Maurer, 532; G. Burnett, 509; A. Clemes, 538; H. Burnett, 571; M. Packard, 505; E. Keizer, 510; L. D. Hess, 514; D. Hickey, 540; L. Hess, 516; E. Dennis, 551.

Chelsea Nite Owl League

Standings as of Nov. 18

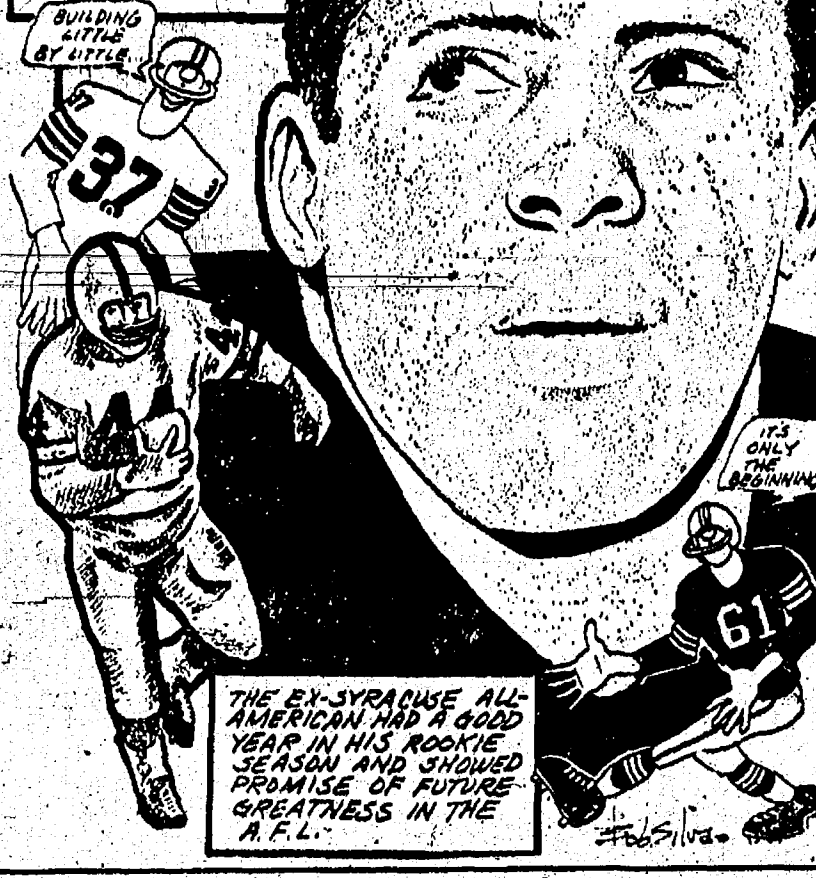
	W	L
Wahl's Dinos	26	18
Stivers	25	19
Don's Std. Service	25	19
Chelsea Drug	23	21
Wolverine Tavern	23	21
Palmer's Mustangs	22	22
Walshenaw Crop Ser.	22	22
Team No. 12	21	23
Jack & Son Barbers	20	24
Waterloo Garage	19	25
Cavanaugh Lake Store	19	25
Foster's Men's Wear	19	25

425 series and over: L. Jarvis, 467; B. Hatley, 449; P. Harook, 441; M. Breitenwischer, 442; C. McGlenon, 430; R. West, 458; G. Klink, 490; R. McGibney, 491; G. DeSmith, 491; B. Fike, 443; E. Williams, 447; V. Finch, 426; D. Sannes, 446; M. L. Westcott, 481; P. Elliott, 473; S. Bowen, 459; M. DeLaTorre, 445; N. Packard, 451; B. Fritz, 487; N. Collins, 492; V. Hopkins, 477; N. Prater, 430; E. Vocum, 478; A. Hocking, 423; E. Schulz, 427.

150 games and over: G. Klink, 214-162; L. Jarvis, 167-164; P. Harook, 165; G. DeSmith, 153-163-173; E. Williams, 160; C.

SPORTS CORNER

ADENVER'S BRONCOS ARE IN THE PROCESS OF A MAJOR REORGANIZATION CENTERED ON THE DEVELOPMENT OF SUCH YOUNG PLAYERS AS FLOYD LITTLE.



THE BRONCOS ARE ALL ABOUT FLOYD LITTLE. HE IS THE NEW STAR OF THE TEAM AND SHOWS THE SIGN OF A FUTURE GREATNESS IN THE A.F.L.

Charlie Brown and Snoopy's Friends

Standings as of Nov. 16

	W	L
Snoopy Stars	20	10
Strikers	19	11
Lions	19	11
Ringers	18	12
Road-Runners	16	14
Charlie Brown All Stars	16	14
Tigers	15	15
Red Barons	13	17
Roppers	13	17
Super B's	13	17
S.M.K.D.'s	10	20
Born Losers	8	22

Games of 100 and over: Vicki Burnett, 133; Linda Hafner, 122; Pam Greenleaf, 118; Dale Poertner, 112-108; John Toon, 112-103; Jerry Milliken, 111; Mark Pennington, 110; Mick Bowen, 109; Jan Lewis, 107; Cindy Harook, 101; Debbie Fitzsimmons, 100.

Junior Swingers

Standings as of Nov. 16

	W	L
Pin Busters	23	5
Gutter Guys	20	8
Sweet Suzies Swingers	17	11
Blue & Gold	12	16
B. B. & B.	7	21
The Bombs	3	25

Games of 130 and over: Betty McNutt, 193; Mike Murphy, 163; 132; Dan Adams, 148; Brian Schittenhelm, 137-133; Laurie Sannes, 136; JoAnne Harvey, 134; Jane Belser, 134; Kathy Sannes, 133; Kelly Murphy, 131.

Series of 400 and over: Betty McNutt, 412; Mike Murphy, 409; Brian Schittenhelm, 400.

Chelsea Suburban League

Standings as of Nov. 13

	W	L
Western & Southern	29	15
Kreuzer Arborland	29	15
Dana Corp.	27	17
Patty Ann Shoppe	27	17
Dancers	26	18
Four Mobil	24	20
G. A. Sales	24	20
State Farm	22	22
Chelsea Lanes	18	26
Pittsfield Plastics	15	29
Waterloo Garage	13	31
Artex Roll-On's	8	36

425 series and over: L. Jarvis, 467; B. Hatley, 449; P. Harook, 441; M. Breitenwischer, 442; C. McGlenon, 430; R. West, 458; G. Klink, 490; R. McGibney, 491; G. DeSmith, 491; B. Fike, 443; E. Williams, 447; V. Finch, 426; D. Sannes, 446; M. L. Westcott, 481; P. Elliott, 473; S. Bowen, 459; M. DeLaTorre, 445; N. Packard, 451; B. Fritz, 487; N. Collins, 492; V. Hopkins, 477; N. Prater, 430; E. Vocum, 478; A. Hocking, 423; E. Schulz, 427.

150 games and over: G. Klink, 214-162; L. Jarvis, 167-164; P. Harook, 165; G. DeSmith, 153-163-173; E. Williams, 160; C.

Chelsea Lanes Mixed League

Standings of Nov. 15

	W	L
Triangle Trailer Sales	23	16
Lyndon Color Lab	27	17
Chelsea Lanes	27	17
Doody & Turner	24	20
H. & H.	24	20
Johnson's Tool Shop	24	20
Poor-Fitz	24	20
Wolverine No. 2	23	21
Rabbitt & Althouse	21	23
Gephart & Barkley	17	27
Wolverine No. 3	13	31
Wolverine No. 1	12	32

Men's 175 and over: D. Lyndon, 217-176; O. Johnson, 215-198-197; A. Sannes, 185-212-189; E. Greenleaf, 211; H. Burnett, 211; M. Poertner, 201; G. Burnett, 188-181-175; R. Hutzler, 185; R. Fike, 185; D. Alexander, 183; M. Rabbitt, 181-179; J. Collins, 178.

Men's 475 and over: O. Johnson, 610; A. Sannes, 580; D. Lyndon, 560; G. Burnett, 544; H. Burnett, 531; M. Poertner, 525; R. Fike, 518; E. Greenleaf, 510; D. Alexander, 514; R. Hutzler, 506; E. Harook, 505; M. Rabbitt, 485; J. Turner, 478.

Women's 150 and over: K. Lyndon, 209-199-151; F. Gephart, 200-168-190; B. Fike, 158-183; E. Johnson, 191-154; J. Hutzler, 180-181; A. Turner, 179; L. Doody, 177-171; V. Harook, 168; J. Rabbitt, 158-165; R. Harook, 156-158-158; L. Alexander, 158; H. Morgan, 150; M. Burnett, 150; N. Althouse, 152; A. Sindinger, 150.

Women's 450 and over: F. Gephart, 587; K. Lyndon, 529; R. Johnson, 489; J. Hutzler, 480; B. Fike, 484; L. Doody, 470; R. Harook, 482; J. Rabbitt, 471.

Industrial League

Standings as of Nov. 20

	W	L
Fearsome Four Plus 1	15	0
Dana Corp.	13	12
Chelsea Lanes No. 2	11	14
Chelsea Lanes No. 1	11	14
Cook's Store	10	14
Central Fibre	8	16

High series: M. Manville, 608; P. Kelly, 525; L. Bauer, 509; J. Fortner, 505; B. Schenk, 502.

Over 200: M. Manville, 217.

Old Timers League

Standings as of Nov. 15

	W	L
Great Lakes	27	16
Bob & Otto	26	14
City Bus	26	14
Chelsea Lanes	24	20
Mather Co.	23	21
Colonial Lanes	21	23
Hotzel Service	21	23
Washenaw Lanes	21	23
Stain & Goetz	20	24
Hartman Ins.	19	25
Nelson Reulter	19	25
Ypsi-Arbor	16	24

Games over 200: Guy Correll, 208; Pat Kelly, 208; O. F. Cavenader, 201.

High team game: Hotzel Service, 821.

from HISTORY'S SCRAPBOOK

The Pearl Harbor Inquiry opened, November 15, 1945.

The American Federation of Labor was formed, November 15, 1881.

The United States and the Soviet Union established diplomatic relations, November 16, 1933. Hungary was proclaimed a republic, November 16, 1918.

President Roosevelt and Secretary Hull received Japanese envoys, November 17, 1941.

The battleship Maine was launched, November 18, 1890.

John L. Lewis resigned as president of the CIO, November 18, 1940.

The W.C.T.U. was organized, November 19, 1874. Rosa Tweed was convicted of fraud in New York, November 19, 1874.

French troops reached the Rhine River, November 20, 1944. German war criminals went on trial at Nuremberg, November 20, 1945.

War time prohibition act was passed, November 21, 1918. Gen. Douglas MacArthur was appointed chief of staff, November 21, 1930.

High team series: Washtenaw Lanes, 2,230.

High ind. game and series: William Fishlock, 204-542.

Other 500 series: Roy Carpenter, 529; Floyd Menery, 520; Grant Austin, 505; Henry Vick, 501.

RIGHT PLACE, RIGHT TIME
John Wyatt pitched for the Red Sox when they won the pennant in 1967 and for the Tigers when they were world champions in 1968.

HELLER ELECTRIC
Licensed Electrical Contractor
ALL TYPES OF WIRING
(No job too big or too small)
DAY OR NIGHT
CALL GR 9-3816
20640 Sager Rd., Chelsea

FEED FOR PROFIT

Get Fortified Feeds...
Step Up Egg Production
Prove it to yourself. Our Fortified Feeds are just the rations your hens need to produce more eggs more profits for you.

Farmers' Supply Co.
Phone GR 5-5511

BOWL for the fun of it...

Having Fun Lately

Club and Social Activities

SIGMA PHI
Nov. 4 an open meeting for new members was held at the home of Mrs. David Longworth. The group was given by the members Mrs. Alfred Smith, Mrs. Fred Barkley, Mrs. Ronald and Mrs. William Eisen.

Nov. 18, the chapter met at the home of Mrs. Don Alexander. Plans were made for Christmas bazaar, to be held at the home of Mrs. Al. The group surprised Mrs. Trinkle with a baby shower. Treatments were served.

IBAN MOTHERS
Nov. 12 meeting of the IBAN Mothers Child Study was held at the home of Mrs. Longworth with 12 members present. Mrs. Robert Diriam, Mrs. Wallyke presented a paper on the Indians on reservation in Nevada.

Free Auxiliary Committees Busy on Night of Dimes

Chelsea Jaycee Auxiliary met at the home of Mrs. Walter with Mrs. Tom Dunlap and Mrs. Brannan as co-hostesses. Jim Lorenz was a guest. Edie Blotcher, president of the Auxiliary, presided over the meeting.

Chairmen and committees for the March of Dimes are established and functioning. Chairman Mrs. Gerald decided to have a Christmas at the December meeting. Mrs. George Ellenwood, Health chairman and her committee will go to the Mental Health Fund which is for the education of Ypsilanti State hospital.

Donald Proctor, remembrance chairman, announced the son to Mr. and Mrs. Cumber and a son to Mrs. Gerald Blough. They presented sweaters from the

Older Adult Group Holds Thanksgiving Party Saturday

The Older Adult Group of the Methodist church, with 38 members and guests present, held their annual Thanksgiving dinner meeting in the church social center Saturday, Nov. 16.

Table decorations, provided by Mrs. Rae Lillie and Mrs. Irven Wells, included gourds, figures of turkeys and other items appropriate to the season.

The Rev. Robert Worgess, presiding during the program, "Thanksgiving Memories," called on each one present to relate personal remembrances of Thanksgiving. They particularly remembered. This proved to be very interesting according to reports of the meeting.

A devotional period, in charge of Mrs. Herbert Paul, included group singing of hymns.

During the business session Mrs. Harry Prudden, the group's "sunshine" chairman, reported that cards had been sent to Miss Jennie Ives, Mrs. Bertha Kate Riemen-schneider, Mrs. Mabel K. Foster at Cedar Knoll and Mrs. L. I. Lord at the Methodist Home.

Mrs. Winifred Coffron, director of the group, thanked Mrs. Lyman Adams, chairman, and Mrs. Rae Lillie, co-chairman, for taking charge of the special dinner and all who helped in any way to make it such a success.

The Rev. Worgess announced that the group is invited to be guests of the XYZ's, the senior group of St. Paul's United Church of Christ, at a pot-luck dinner and program at St. Paul church Friday, Dec. 6, at 6:30 p.m. Those who attend are to bring their own table service and a dish to pass. Members of the Methodist group who need transportation to the meeting are to call the Rev. Worgess or Mrs. Coffron.

The Older Adult Group's Christmas party at the Methodist church is scheduled for Dec. 21, also a pot-luck affair. There will be an exchange of 50-cent gifts. On the committee for the program and for table arrangements are Mr. and Mrs. Alfred Hoelzer of Ann Arbor.

Saturday's meeting was closed with a benediction by the Rev. Worgess following group singing of "God Be With You 'Til We Meet Again."

Engagement Told for Emma Jean Hillis

Mr. and Mrs. Cal Hillis of 829 Morton Rd., Stockbridge, announce the engagement of their daughter, Emma Jean, to Bruce Cluckey, son of Mrs. John Peck and the late Frederick Cluckey.

He is employed at Central Outdoor Advertising and is a 1966 graduate of Dixie Hollins High school in St. Petersburg, Fla.

Miss Hillis is attending Stockbridge High school.

A June wedding is being planned.

Co-Op Nursery School Notes

Teacher Mrs. Fred Meyer

The children in the four-year-old sessions have been especially busy this month. They were visited by Duane Luick of the Ann Arbor Fire Dept., who brought his firefighting clothes and let the children try on his boots and hat.

Chelsea Police Chief George Meramuk came out with his police car and took the children for a ride, showing them the siren, lights and radio.

Mrs. Foster, the Chelsea crossing guard, came out and talked to the children about safety boys and crossing guards.

The children in all sessions have enjoyed painting with sponges making fire hats, free dancing to a variety of music and flannel board games at quiet time.

Student from Mrs. Dean's family living class at Chelsea High school have been observing all sessions of nursery in order to learn more of the behavior of three- and four-year-olds.

There are openings in the four-year and three-year sessions. For information call Mrs. Doug Stark, 475-5664 or Mrs. Tom Donkin, 475-7201.

Watershed Council To Discuss Water Pollution Control

The Huron River Watershed Council will continue tonight the exchange of ideas concerning specific local and regional planning for water pollution control by considering the physical realities and engineering requirements of future plans.

Problems discussed will be the meaning of upgrading sewage treatment plants, operation of regional sewage collection and disposal systems.

George Bringham, chief sanitary engineer of the Wayne County Road Commission and John Holland of McNamee, Porter & Seelye, consulting engineers, have been invited to furnish explanations for these problems.

The meeting is scheduled for 8 p.m. at the Boulevard Room, North Campus Commons, University of Michigan, Ann Arbor.

The Watershed Council quotes the following ratings for pollution control for Chelsea Industries affecting Letts creek: Dana Corp., Longworth Plating Co., and Federal Sewer Works control provided but adequacy not fully established; and North American Rockwell Corp., control adequate.

CUB SCOUT NEWS

DEN 1, PACK 415
Cub Scouts of Den 1, Pack 415, have met at the home of the den mother, Mrs. George Atkinson, Cavanaugh Lake three times since last report.

Nov. 5 we completed plans for a skit for this month, and played outdoor games. Nov. 12 we worked on a craft project for November and talked over holiday ideas. This meeting closed with the flag ceremony and songs. Nov. 19, we practiced our planned skit, finished our crafts and played indoor games. Treats were furnished by Gary Packard, David Schrottenboer and Greg Slocum.

CORD KEEPER

Here's a tip on how to keep track of detachable appliance cords. Save the tubes from rolls of toilet tissue and paper towels. Fold an appliance cord and push it into a tube. Then mark the tube to indicate which appliance the cord matches.

A little bit of work is often more irksome than a larger task.

Gridders of the Week



LEONARD KOZMA, wearing Bulldog jersey No. 86 for the second time this year, was listed on the all-conference team last week. Len participates in three varsity sports, and is now practicing for the basketball team for the second year. Warmer weather finds him catching or playing in the outfield of Chelsea's baseball team. Among his favorite sports are swimming, hunting and fishing. Len, a junior, is 6' 2" tall and weighs 170 pounds. He lives at 18186 North Territorial with his parents, Mr. and Mrs. Robert Kozma. He has one brother, Larry, at college; and a sister, Suzanne, a June Chelsea High school graduate.

SAM HOOVER just finished his first and last year of Bulldog football. Sam could be spotted during season in the end slot in jersey No. 44. He is a veteran pole vaulter for the track team. Sam stands 5' 10 1/2" and weighs 165 pounds. He enjoys hunting and "all other sports." During school hours Sam enjoys shop most. Next year will probably find him enrolled in college. He lives at 1235 Fletcher Rd. with his parents, Mr. and Mrs. Warren Hoover. He has two brothers and two sisters. One brother, Dan, is a freshman at Chelsea High school.

Huron River Anti-Pollution Group Seeks Ways To Help Save Area Lakes

Lakes in the area have not escaped the pollution that has attacked other bodies of water in the state and throughout the country.

High fecal coliform counts in Belleville Lake forced the Wayne County Health Department to close the lake to swimming and water-skiing July 23. The causes and solutions to the problem were discussed recently by a panel at the council meeting in Ann Arbor. More than 100 lake-area residents have formed the Huron River Anti-Pollution Commission. Raymond Suliman is heading a group trying to obtain 25,000 signatures on petitions calling for the Water Resources Commission to apply standards to allow swimming in all lakes in the Huron River Basin. The group has contacted federal representatives Ford, Esch and Dingell and state representative Mahalak.

In a related matter, Ypsilanti township has received recommendations from Johnson & Anderson, Inc., consulting engineers, for improving conditions on Willow Run Creek. In addition to a recommendation to the township for auxiliary service from the Wayne County interceptor system, the firm advised dredging and filling in sections. Although discharges to Willow Run Creek are now controlled, sludge accumulated for 20 years and is washed into Belleville Lake.

Action is being taken to prevent the spread of conditions such as these and to alleviate the problem in areas already affected. The Joint Ypsilanti Recreation Authority (JYRA) is close to becoming a reality as soon as the final cost-sharing arrangements

are finalized. The authority is to develop recreation on Ford Lake. The Ford Motor Co. is expected to give the \$2.25 million lake and adjoining property to the authority. Recreational development of the area would qualify for Land and Water Conservation Fund Grants handled by the U. S. Bureau of Outdoor Recreation. The city of Ann Arbor already has projects financed this way.

In the Southeastern Livingston county area representatives of planning commissions, township boards and city councils have been meeting regularly in an attempt to define and develop a strategy to deal with pollution.

The Michigan Water Resources Commission has asked communities operating sewage treatment plants to advise them of the possibility of attaining 80 percent phosphate removal within two years rather than the original nine. Phosphates are the key chemical compounds that trigger excessive algae growth. This commission expects to take final action regarding standards applied in the Huron River Watershed in January.

WHITE ALUMINUM GUTTERS

Seamless, jointless, machine made. Any length.

Call 428-8468
Wilson Metal Shop
Manchester, Mich.

WATERLOO BEAUTY SHOP

Operated By Rosemary Klink.

Open Tues. thru Sat., 8 a.m. to 6 p.m.

475-8895

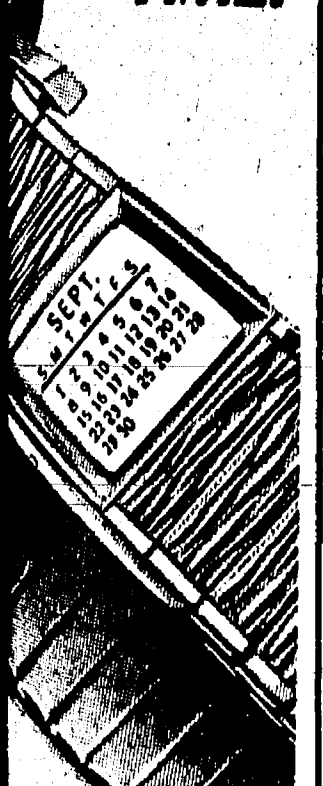
CALL FOR APPOINTMENT

Remaking Hints

Red paint gives depth to walls. Its rough, handsome blends beautifully with all. While textured paint is, create a random patting over the surface. Special roller, whisk broom, or other objects that will design.

Most important thing to ensure that stored clothing is out of storage in good is to put them away. Even an hour of wear can ruin oils and perspiration. Be especially careful of children's clothing, for they forget they've worn a since it was cleaned.

THE WATCHBAND THAT TELLS TIME.



Read in all the news. You're on television. Now see it in action. The Watchband Calendar Watchband. It puts the whole year at your wrist—and then some. The Twist-O-Flex styles. In steel, \$8.95. Yellow, \$11.95. For any man. Gift occasion.

Defender by Speidel
FINANS
Jewelry Store



GIRL SCOUTS

TROOP 58

Girl Scout Troop 58 met Monday, Nov. 18. We discussed how much to spend for Christmas gifts and planned a Christmas party. Each patrol has a nickname and is working on a badge. Patrol 1 is working on a collector's badge. Patrols 2 and 4 are working toward their sewing badge. Patrol 3 is working on their troop dramatics badge.

Patrol 2 had the opening of the meeting. Patrol 4 closed the meeting. Patrol 1 had a game, Patrol 3 had clean-up.

Susan Schulze, scribe.

Nannette Tandy Chosen Co-Ed Correspondent

Nannette Tandy, daughter of Mr. and Mrs. John Tandy, has been named Co-Ed correspondent for the 1968-69 school year, according to the editor of Co-Ed Magazine.

Co-Ed is published nationally by Scholastic Magazines, Inc., for home economics students. It contains articles on fashion, food, beauty, home furnishings, and fiction.

Nannette was selected for qualities of leadership and enthusiasm for home economics after her name was proposed by her home economics teachers, Mrs. Virginia Dean and Mrs. Katherine Reddeman. She will serve as junior advisor to Co-Ed editors by keeping them informed of activities at her school.

When growing plants under artificial light, you'll have a problem if plants of the same variety are not of the same height. An easy cure is to boost the smaller plants up on inverted clay pot bases to bring them as close to the light as their taller neighbors.

Telephone Your Club News To GR 5-3581.

Savings for Early Santas

Use Our Easy Lay-Away Plan

SHOP DANCER'S

Chelsea's Friendly Dept. Store

Carbon Monoxide Fumes Create Winter Hazard

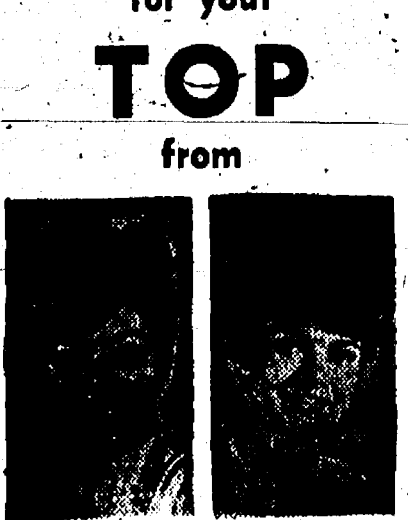
Taking proper wintertime precautions against the dangers of carbon-monoxide which can occur in cars, cabins and homes is again urged by the Michigan State Police.

Several deaths attributed to this deadly gas have been reported in recent weeks. Some occurred in cars, others in homes.

The State Police emphasize that carbon monoxide can unsuspectingly do its fatal damage because it is an odorless, colorless gas. It can be dangerously concentrated in cars where faulty exhaust systems permit the fumes to be drawn into the passenger compartment and in cabins and homes where the gas can build up from faulty operation or improper venting of flame-type heating devices. Drowsiness is one of the first symptoms of the effects of the gas. This may be accompanied by ill feeling, nausea and vomiting.

ICY LAND
Finland's two gulfs and 55,000 lakes freeze early. In a harsh winter, a motorist can drive from Finland to Sweden, some 50 miles, distant, across the frozen Gulf of Bothnia.

TIPS for your TOP from



TODDY and FRAN

Whether women are frizzing their hair with hot curling irons as they did in "the old days" (and many do again) or ironing it straight—whether they're wearing it to their hips or above their ear tips, it's obvious women care about their hair—as much or more than any other part of their grooming. Naturally, if you wouldn't design your own dresses or throw together your own foot-wear or use cornstarch for face powder, you won't want to improvise on this vital makeup of your grooming: your hairdo. You'll want professional assistance as you do in other facets of your appearance, so why not call us?

Magic Mirror Beauty Salon
Phone 665-0816
5585 Jackson Rd., Ann Arbor

Santa has Christmas well in hand!



Because he joined our Christmas Club!

FOLKS USE CHRISTMAS CLUB FOR MANY PURPOSES

HERE ARE A FEW:

- Christmas • Vacations • Education
- Appliances • Taxes • Rainy Day

YOU CAN CHOOSE THE CLASS THAT FITS YOUR BUDGET AND YOUR GOAL

\$.50 each week for 50 weeks	\$ 25.00
\$ 1.00 each week for 50 weeks	\$ 50.00
\$ 2.00 each week for 50 weeks	\$ 100.00
\$ 3.00 each week for 50 weeks	\$ 150.00
\$ 5.00 each week for 50 weeks	\$ 250.00
\$10.00 each week for 50 weeks	\$ 500.00
\$20.00 each week for 50 weeks	\$1,000.00

NOW...
is the
time to...



FIRST PAYMENT ON 1969 CHRISTMAS CLUB DUE NOVEMBER 23

CHELSEA STATE BANK

The Hi-Light

Edited by Students of the Chelsea High School Journalism Club

Mr. Moore's 5th hour Art class is now on an individual study basis program. The students have a selection of art work that they can do. Kathy Powers and Caryl Thornton are designing a concrete sculpture 3 feet x 2 feet, which will be placed in the fish bowl at the high school, on completion. Other students in the Art class are sculpturing with rock and styrofoam.

The French Department has made available application forms for the scholarship to France. Applicants will be required to have letters of recommendation, to take part in the French placement test, and also to answer questions concerning governmental issues in America, American views of the French, and the French views of Americans as posed by the French. The scholarship winners, limited to second and third level French students, will be announced before Christmas vacation.

Ten students, nine senior and one junior work under the program. This program involves attending school in the morning and working in an office for vocational training in the afternoon.

The 1968 Chelsea Nickel Carnival will be held Nov. 23, 1-7 in the High School Gym. The carnival, which is sponsored by Student

Council, has planned barrels of fun for everyone. Some of the games include: rifle range, gambling wheel, ring toss, dart throw, 12-sided die, and yantzee.

The proceeds from the carnival are going to be used to purchase a stereo system for the high school.

Band Boosters Plan No December Meeting

Approximately 75 Band Boosters and guests enjoyed the Thursday night slide show presented by Heide Sprague. The slides were taken during Heide's trip to Mexico last summer.

Since no December meeting has been scheduled, the group will meet next Jan. 9 at 8 p.m. in the Chelsea High school band room. The Band Boosters have announced that the deadline for placing orders for Christmas fruit cakes will be Nov. 27. Interested persons should call Mrs. William Blaess.

INDIAN DOLLS
Dolls were popular in America long before Columbus. Indian tribes twisted corn husks into figures for use in ceremonies and as children's playthings.

Chelsea School District Cafeteria Menu

Monday, Nov. 25—Savory beef over biscuits, buttered vegetables, bread and butter, ice cream, cookie and milk.

Tuesday, Nov. 26—Hot dogs on bun with trimmings, baked beans, carrot and cabbage slaw, dessert and milk.

Wednesday, Nov. 27—Pre-Thanksgiving dinner—turkey, mashed potatoes and gravy, sweet potatoes, bread and butter, pumpkin pie and milk.

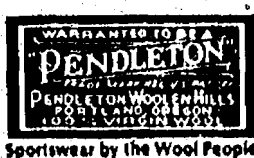
Thursday, Nov. 28—Happy Thanksgiving vacation.

GENERAL BUSINESS SERVICES

Do you have a problem with your business records?

CALL
DON BEACH
426-4834

POSITIVELY PENDLETON



SWEATER-
JAC
\$22.00

ROBE
IN
BAG
\$16.00



STRIETER'S MEN'S WEAR
"The Place To Go For Brands You Know"

Ice Warning Signs Going on X-Way Bridges

Lansing—Ice warning signs will be posted soon in advance of bridges on Michigan's freeway system, the Department of State Highways reports.

The diamond shaped, black and yellow signs will read, "WATCH FOR ICE ON BRIDGE."

The Department said that highway bridges sometimes become coated with ice even though "the highway itself may be clear and dry. This can happen when air temperatures fall below freezing, but warmer ground temperatures keep road surfaces above the freezing mark.

Bridge surfaces, however, are exposed to freezing from below as well as above and sometimes ice up before the roadway does.

Approximately 1,000 of the warning signs will be posted. In summer months, they will be turned parallel to traffic to avoid confusion.

Highway Dept. Testing Plastics as Lane Markers

Lansing—The Department of State Highways is experimenting with extruded thermoplastics in an effort to find longer lasting lane marking material for use on state highways.

The plastics contain thousands of microscopic glass beads for reflective purposes and are said to have life expectancies of three to seven years.

Standard lane marking paint has a life of six months to a year and must be repainted at least once a year.

Subscribe Today to The Standard!



Winter Is HERE!

We have the materials you will need to save on heating costs

COMBINATION DOORS and WINDOWS

Snug in winter... cool in summer.



STORM SASH
STORM WINDOWS
Weather Stripping

CAULKING COMPOUND
Cartridges and Guns

Finkbeiner Lumber Co.

Phone Chelsea GR 9-3881
On Old US-12 Just off S. Main St.
MARTIN STEINBACH, Owner

OFFERED FOR ADOPTION: This trio of overgrown, stuffed animals will be moving into their new homes the evening of Nov. 23, after the Chelsea High School Nickel Carnival. Tickets are being sold by student council members now and at the carnival. Sandwiched between Gertrude and Teddy is Chelsea High school freshman Jeff Parsons.

Lt. James F. Schiller Assigned to Infantry Division in Vietnam

Pleiku, Vietnam—Army First Lieutenant James F. Schiller, 22, son of Mr. and Mrs. Ernest O. Schiller, 2820 Fletcher Rd., Route 2, Chelsea, Mich., was assigned Oct. 31 to the 4th Infantry Division near Pleiku, Vietnam, as a forward observer.

His wife, Vickie, lives at 10850 Chelsea Rd., Manchester, Mich.

Michigan Bell Is Distributing New Directories

Michigan Bell Telephone Co. began distribution of new Ann Arbor-Ypsilanti area telephone directories Saturday, Nov. 16.

Nicholas J. Prakken, manager, said some 184,000 directories will be delivered in Ann Arbor, Chelsea, Dexter, Manchester, Milan, Whitmore Lake, Willis and Ypsilanti.

It will take nearly a week to complete distribution, Prakken said.

Again this year, the covers of the new telephone books feature a color reproduction of an oil painting, "The Capital Moves to Lansing." This is one in the series of historical paintings done by Robert Thom under a commission from Michigan Bell.

As provided by the state constitution of 1835, Michigan legislators were to select a permanent location for the state capital, which was Detroit in 1847. Deadlocked over the choice of cities, the legislature finally picked a site "in the township of Lansing in the county of Ingham."

The artist portrays a white frame building under construction in a clearing chopped out of the woods. The new capital was ready for the legislature Jan. 3, 1848.

Clergymen Urge Safety On Highways

Michigan clergymen are asked to devote some part of the weekend of Nov. 22-24, to urging citizens and parishioners to help save bodies and souls on the highways.

The annual Traffic Safety Sabbath is co-sponsored by the Michigan State Safety Commission with the blessings of many religious leaders.

"More Michigan young men of military age have been killed on our 'peaceful' state highways and city streets than in the fierce war in Vietnam," says the folder issued by the Commission to mark the event. The folder contains quotable material from religious leaders of many faiths and suggestions as to what ministers and church members can do about preventing injury and saving lives on the highway.

The Conference of Religious Leaders of the National Safety Council, composed of church leaders of national note, recently urged the application of sound religious tradition to the present tragic loss of life on the nation's highways. Four times as many are killed in large preventable traffic occurrences as are killed by the well publicized national crime wave, the conference noted.

HAND SAVER

When getting your garden tools into shape, drop an unbreakable metal tube of hand cream into the tool basket. Use the cream to protect your hands.

Several Changes Made in '69 License Plate Sales Program

Several changes have been made by the Michigan Secretary of State effects the 1969 license plate sales. First, commercial and trailer plates went on sale Oct. 1, 1968 and will expire Feb. 28, 1970. Passenger and motor cycle plates went on sale Nov. 15, 1968 and will expire March 31, 1970. Hopefully, this will tend to eliminate the traditionally long waiting lines during the last few days of February.

New fee schedules are also being used. Since the per 100 lb. fee for passenger plates has not been changed since 1939, the new fees will compare more closely to other states in the area that do not charge a personal property tax on motor vehicles.

Passenger cars, farm trucks and pickups, under 4,500 lbs., will require a fee of 55 cents per 100 lbs. Trailer fees will be handled differently. Those weighing 500 lbs. or less will be \$2.50; 501 lbs. through 1,500 lbs. will be \$5 and those 1,501 lbs. and over will cost \$10. This schedule will include semi-trailers.

In the commercial truck area is the greatest change. The fees on ALL tractors and trucks whose unladen weight is more than 8,000 pounds, are licensed based on an elected gross weight. This means that the owner will have to declare the maximum gross weight of the tractor or truck, plus the weight of all trailers hauled, plus the weight of the load to be hauled. Failure by the owner to declare an amount great enough to cover any loads hauled could mean a traffic violation ticket. The penalty would be an amount equal to twice the difference between the fees paid and the fees that the actual load would be assessed.

Wallace Wood, branch manager in Chelsea, says the new license applications are available at his office for those who did not receive the pre-printed forms through the mail before the sale dates. Requirements to purchase plates are the same as last year—proof of ownership by last year's registration, title or a pre-printed application, proof of insurance and cash enough for the new fees.

On the front of the registration at the bottom of the two-section form is a space for the first named owner's driver's license number. This number consists of a letter (the first letter of the driver's last name) followed by 12 numerals. Those drivers in the same family household usually have the same first set of three numerals. The next nine are the driver's own numerals. On the reverse side are three spaces for the owner to sign. On the left section the signatures certify that liability insurance will be maintained on the vehicle unless the \$95 Uninsured Motorist fee is paid to the state and that the applicant owns the vehicle.

On the right side, the signature certifies (1) insurance, (2) the weight of a commercial vehicle or trailer and (3) the elected gross weight of a commercial unit.

Chelsea Branch Office hours are 9 a.m. to 5 p.m. on week days and from 9 a.m. to 2 p.m. on Saturdays.

Decals Proclaim Purity of Michigan Meat Products

Colorful decals proclaiming this message, "Consumer Protection through Meat Inspection," will soon greet Michigan residents at restaurants, retail meat counters and other locations throughout the state.

Nearly 30,000 of the decals are being distributed this month in a co-operative program of the Michigan Department of Agriculture and the meat industry, to assure consumers of the purity of Michigan meat products.

Pastel blue 4 by 4 inch decals, imprinted in dark blue and red, inform the public that "our meat is inspected and approved" by the Michigan Department of Agriculture through the USDA co-operative meat inspection program. Meat inspection costs are shared on a matching state-federal basis.

Restaurants, hotels and clubs are being encouraged to display the emblems on their front doors.

The first essential in the security of a worker is to be able to work.

MEDICINE IN THE FUTURE
San Francisco—President of American Medical Association Dwight Locke Wilbur predicts practice of medicine will change drastically over the next 10 to 20 years. He said in the future family doctor will be almost extinct as a dog-eat-dog practice is the growing thing.

Gift SHOP EARLY
at
DANCER'S
Chelsea's Friendly Dept. Store

CHARM BEAUTY SALON

4396 CLEAR LAKE ROAD
(Formerly of Grass Lake)

Two Operators - Hair Styling and Wig Service

PHONE 475-2700

Notice of Change of Hours:

SALYERS COLONIAL DINING

112 E. Middle St., Chelsea

Enjoy good eating in friendly
Early American surroundings.

Open Monday through Wednesday, 10 a.m. to 9 p.m.
Closed Thursdays

Open Friday and Saturday, 10 a.m. to 10 p.m.
Open Sunday, 8 a.m. to 8 p.m.

OWNED & OPERATED BY
JEFF and MARILYN SALYERS

Let General Electric Wash Your Thanksgiving Day Dishes!

Spend dishwashing time with your family

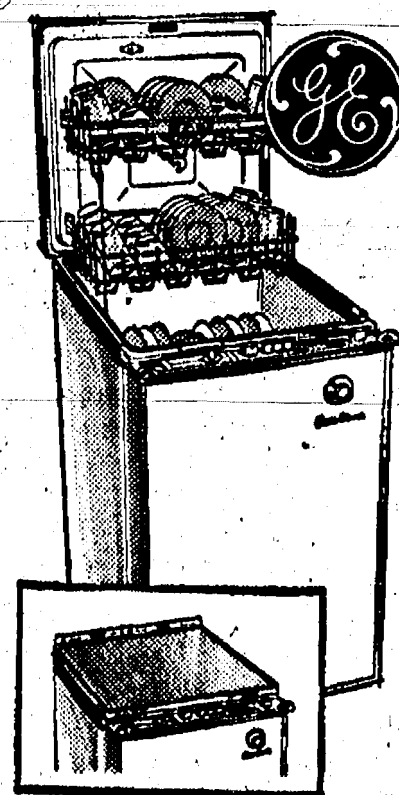
Built-in
Automatic
Dishwasher



A General Electric Dishwasher means more time and fun with your family!

*Thoro-Wash is General Electric's name for more than one level washing action coupled with Rushway drain.

New Convenience!
Twin Lift-Top Racks
for Easy Loading



Mobile Maid®
Dishwasher

- 3-Way Washing Action PLUS Flush-away Drain gives surging washing power.
- No Hand Rinsing or Scrubbing... just tilt off large or hard food scraps.
- Automatic Detergent Dispenser adds detergent at the proper moment.

I Also Help Husbands!

Open Friday Evening Until 9. Close Saturday at 4 p.m.

FRIGID PRODUCTS

113 N. Main St., Chelsea

LLOYD R. HEYDLAUFF

Phone GR 9-6651